



www.blackice.com

15 % Discount for

PDF OEM Printer Drivers

Valid through March 31, 2011
This offer cannot be combined with any other discounts.

What's Inside?

- **Advanced Save As options**
 - Redirect printing
 - Send Email
 - Upload to SharePoint
 - Print Watermark
- Printing Tips for Developers

Announcements

In order to provide the best support for our customers **technical support requests must be submitted through our website's support forms.**

The Black Ice Support form generates a ticket number and you must **save this ticket number** for future reference.

Technical support requests for Customers without a valid Maintenance subscription will be handled through the Black Ice Forum.

Contact Information

<http://www.blackice.com>

Phone: 1(603)-882-7711

Fax: 1(603)-882-1344

Exclude Me

If you no longer wish to receive this email [please click here](#).

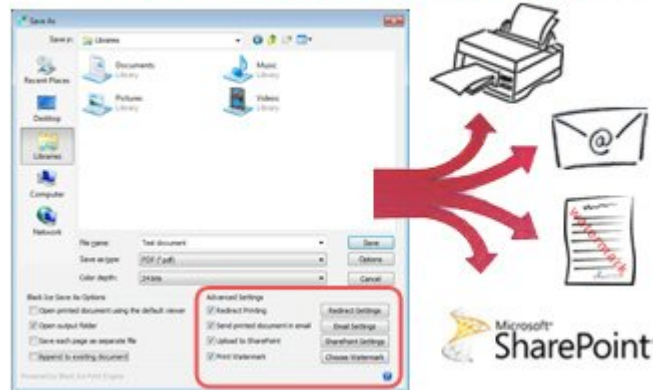
Black Ice Software - March 10, 2011

New! Advanced Save As options

Black Ice Software released version 13.10 of the printer drivers for Win 7/Vista/XP, Windows server 2008 R2/2008/2003/2000 and Citrix XenApp servers. The version 13.10 includes several significant new features in "post printing" or "Save As", such as "redirect printing", email document directly, print watermark, and print/upload to SharePoint.

Black Ice completed the development on the "post printing" or "Save As" feature for the ColorPlus, PDF, Color, Metafile and Monochrome/Tiff printer drivers. All new post printing features are available for both licensed "End User" and the OEM versions of the printer drivers.

New Advanced Save As Options



Redirect Printing

Redirect printing to a physical printer has never been more simplified. You can now redirect printing while at the same time saving your document using the "save as" feature.

Redirect Settings

Send a Printed Document in an Email

The Email option is now available directly from the 'Save As' Dialog! Previous versions had the built in capability to email any document in PDF or TIFF format directly from the Black Ice Printer Drivers. In version 13.10 an email can be sent directly from the Save as Dialog box with ease. The Email Sender utility supports SSL encryption, custom SMTP server settings, and predefined recipients can be specified to send emails without user interaction.

Email Settings

Upload to SharePoint

For added convenience you can now upload converted documents to SharePoint Directly from the 'Save as' dialog. In previous versions the Black Ice Printer Drivers had a built in feature to upload converted files to the designated SharePoint Servers. Now you can

instantly access this same feature through the “save as” dialog box. The uploading may be performed silently without user interaction.

[SharePoint Settings](#)

Print Watermark

Watermarks can now be generated on printed images from the “Save As” dialog box. With Black Ice Printer Drivers you can specify separate watermarks on Portrait and Landscape pages and also separate watermarks on the first portrait page and on the first landscape page.

[Choose Watermark](#)

Printing Tips for Developers

As usual these advanced post printing or “Save As” options can be configured through the printer driver API using the BlackIceDEVMODE functions. Developers can control with what settings the Save As dialog will come up initially for the user.

Black Ice ColorPlus PDF Printer Driver v13.10

[Download Now!](#)