

BLACK ICE NEWSLETTER

JANUARY 2005

NEW PRINTER DRIVER INI FILE GENERATING UTILITY

Black Ice Software is pleased to announce the release of a new utility which will revolutionize the way that developers define the Black Ice Printer Driver's default settings.

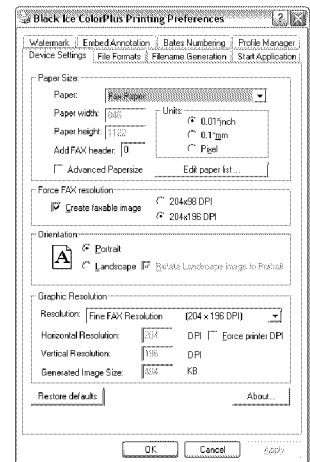
Setting the default printer settings for the Black Ice printer drivers plays a key role in the success of a developer's application. By setting the Black Ice printer driver's default settings from their product installation, developers can be sure that the printer driver's settings will meet the settings required by their application, and reduce the number of support calls from end users

with incorrect printer driver settings.

The most common way for developers to set application specific printer driver settings for the Black Ice printer drivers is through the use of the INI file. Previously, developers had to set the required default settings by specifying the desired flags, totaling those flags and converting them to hex. A simple arithmetic error and your printer driver doesn't install with the expected settings.

To simplify this process, Black Ice Software has released a new utility which automatically generates an

INI file based on the current settings of the selected printer. Now, developer's can simply specify the desired settings from the Black Ice printer driver's user interface and then run the new INI file generation utility to generate an INI file containing the exact settings of the selected printer.



NEW FAX C++/ACTIVEX FEATURES

New Fax Queue Priority

Version 11.02 of the Fax C++/ActiveX development toolkit has recently been enhanced with the addition of a priority system for the Fax C++/ActiveX toolkit's internal fax queue.

When faxing in the business world, there are situations which will arise where a specific document, invoice, etc.

must urgently be delivered via facsimile. However, your particular fax may not be the only fax that is being sent at the moment, in fact there could even be a bulk fax in progress to hundreds or thousands of fax numbers, forcing your important fax to wait until they have completed.

To account for situations like this, Black Ice Software has

introduced a new priority system for faxes sent with the Fax C++/ActiveX. By assigning a priority setting to a fax object, developers can give precedence to faxes from different user, departments, etc., allowing these prioritized faxes to move up in the fax queue and be sent out before the less important, non prior

(Continued on Page 3...)

INSIDE THIS ISSUE:

- **New Printer Driver INI File Generation Utility** 1
- **New Fax C++/ActiveX Enhancements** 1
- **New Document Imaging SDK/ActiveX Filters** 2
- **Specifying Default Settings for the Black Ice Printer Drivers** 2

The BLACK ICE NEWSLETTER is published by Black Ice Software, Inc. The contents of this newsletter in its entirety are Copyright © 2005 by Black Ice Software, Inc. 292 Route 101, Salzburg Square, Amherst, NH 03031, USA. Black Ice Software, Inc. does hereby give permission to reproduce material contained in this newsletter, provided credit is given to the source, and a copy of the publication that the material appears in is sent to Black Ice Software at the above address.

Phone: (603) 673-1019

Fax: (603) 672-4112

E-mail: sales@blackice.com

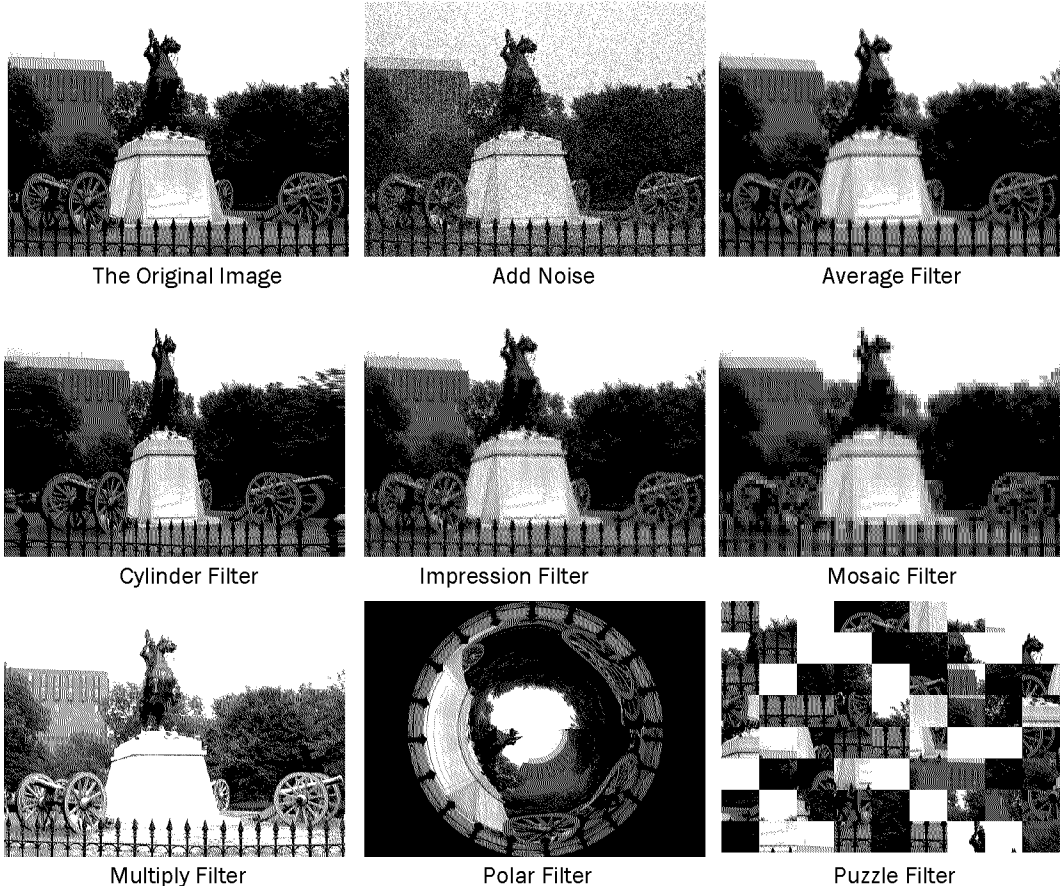
www.blackice.com

NEW DOCUMENT IMAGING SDK/ACTIVE X FILTERS

Black Ice Software has recently added 8 new filters to the Document Imaging SDK/ActiveX development toolkit. The new additions include the following:

1. Mosaic filter
2. Puzzle filter
3. Average filter
4. Cylinder filter
5. Multiply filter
6. Polar filter
7. Impressionist filter
8. Add Noise filter

Developers can download the latest Document Imaging SDK/ActiveX toolkit from the Black Ice website to try these latest filter additions for themselves.



SPECIFYING DEFAULT SETTINGS FOR THE BLACK ICE PRINTER DRIVERS

In most cases, developers using the Black Ice printer drivers will want to install the Black Ice printer with default settings which are specific to their application or service.

Windows 2000 and XP operating systems allow each user to have their own printer settings. The default printer driver settings are used by the system to create the initial settings for new users who have never used that particular printer. If a user has already changed their printer settings, the operating system will have already saved the printer settings for that user and that user's printer settings can be modified only by the user themselves through the printer preferences dialog

box, or by uninstalling and reinstalling the printer with different default settings.

Changing the settings under the Advanced tab change the default settings for a printer, however they do not affect the current printer settings unless the user presses the "Restore Defaults" button. Additionally, changing the Black Ice printer settings through the installation's user interface will change the settings only for the current user, the printer settings are not changed globally.

In order to specify the default settings for the Black Ice printer drivers, developers can either modify the Black Ice

printer driver INI file (Case A) or they can set specific printer settings through the BlackIceDEVMODE DLL or OCX (Case B).

Case A – Using the INI file

Settings specified in the INI file will be used to configure the Black Ice printer driver at installation time as the default settings for any Black Ice printer driver user on the system. To set the printer driver settings at install time a specific INI file can be used and modified to reflect the desired settings. The INI file for each Black Ice printer driver is located by default in the "\Program Files\Black Ice Software, Inc\Black Ice

(Continued on Page 3...)

(Fax Priority, continued from Page 1...)

ity faxes.

In order to implement priority fax support in their application, developers hardly have to change anything in their application. When a new fax is created it will default to the minimum priority value. Developers can either use the CreateFaxObj function or the CreateFaxObject method and assign a priority value directly, or they can use the SetPriority function or method to assign a new priority to a particular fax object, and can use the GetPriority function or method to get the priority of a specific fax object. Fax priorities can be any positive integer value, however Black Ice recommends restricting priority values to any easily maintainable range, such as 1-10. The Fax C++/ActiveX internal fax queue will maintain fax ob-

jects in the fax queue based on their priority, and will manipulate fax objects within the queue internally. Developers can change and assign priority settings to fax objects without having to worry about manipulating existing queue objects.

Improved sample applications

Black Ice software has improved and released new VB, C#, VB.NET and Delphi sample applications for the Fax C++/ActiveX. The newly enhanced sample applications now better demonstrate the functionality and capability of the Fax C++/ActiveX toolkit. The newly released sample applications now more closely resemble the Demo32 C++ sample application which is a robust multi port sample application.



(Printer Settings, continued from Page 2...)

Color Printer Driver\Distribution" folder. (for the color driver for example) The "Distribution" folder is installed with the Printer Driver.

The INI file names are as follows:

For the XP/2000/NT Drivers

- BiCIniNT.ini - for the Color driver
- BiAlniNT.ini - for the ColorPlus driver
- BiEIniNT.ini - for the EMF driver
- BiMIniNT.ini - for the TIFF driver
- BiPIniNT.ini - for the PDF driver

For the Terminal Server Drivers

- BiCIniTS.ini - for the Color driver
- BiAlniTS.ini - for the ColorPlus driver
- BiEIniTS.ini - for the EMF driver
- BiMIniTS.ini - for the TIFF driver
- BiPIniTS.ini - for the PDF driver

In order to use the INI file to specify default settings, developers must perform the following steps:

1. Modify the Black Ice printer driver's INI file to reflect your desired settings

2. Include the updated INI file in your installation
3. Rebuild your installation to include the INI file
4. Uninstall any previous version of the printer driver
5. Reboot your system
6. Install the new printer driver installation which uses the updated INI file.

The Black Ice printer drivers read the INI file at installation time and use the settings in the INI file to set the printer driver settings. If you change the INI file after installing the driver, the only way to have the driver use the new settings is to press the "Restore Defaults" button (for every existing user).

For any settings specified in the INI file and the installation project doesn't set the printers default settings, the settings from the INI file will be used. For a complete list of settings and additional details on using the INI file, developers are encouraged to refer to the Resource Toolkit documentation.

Case B - Using the BlackIceDEVMODE Controls

Developers can use the BlackIceDEVMODE DLL or OCX to set specific settings from their installation to be used as the default printer settings for all users. To change default printer settings using the BlackIceDEVMODE controls, developers should perform the following function/method calls:

```
LoadBlackIceDevmode (PrinterName)
EnableKeepExistingFiles (Devmode)
...
SaveBlackIceDevmode (PrinterName,
Devmode)
```

The above example sets the Keep Existing Files option, if developers want to set any additional Black Ice printer settings they should simply add the function/method call in between the LoadBlackIceDevmode and SaveBlackIceDevmode calls.

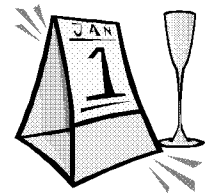
BLACK ICE

S O F T W A R E . I N C .

292 Route 101
 Amherst, NH, 03031
 Phone: 603-673-1019
 Fax: 603-672-4112
 E-mail: sales@blackice.com
 www.blackice.com

Inside

New Printer Driver INI File Utility ,
 Fax C++/ActiveX Fax Priority functionality and more...



Time to upgrade?



Latest Version Numbers

Printer Drivers

Product	Version	Date
Color Printer Driver for Win95/98/ME	5.65	10/28/04
Metafile Printer Driver for Win95/98/ME	5.65	10/28/04
Mono Printer Driver for Win95/98/ME	5.65	10/28/04
PDF Printer Driver for Win95/98/ME	5.65	10/28/04
Mono Printer Driver for NT/Win2000/XP	9.02	10/28/04
Color Printer Driver for NT/Win2000/XP	9.02	10/28/04
Mono Printer Driver for NT/W2K/XP	9.02	10/28/04
Metafile Printer Driver for NT/W2K/XP	9.02	10/28/04
PDF Printer Driver for NT/W2K/XP	9.02	10/28/04
Terminal Server Printer Drivers/2003	9.02	10/28/04

Impact Products

Product	Version	Date
Impact Fax Server	4.50	12/21/04
Impact Fax on Demand	4.06	12/01/00
Impact Fax Broadcast	4.00	09/13/04
Impact ColorFax	6.00	07/22/04
Drag and Drop Printing	2.00	12/24/02

Fax, Voice and Image Toolkits

Product	Version	Date
Fax C++/ActiveX/COM	11.02	12/14/04
Voice C++/ActiveX/COM	11.02	12/14/04
Tiff SDK/ActiveX/COM	10.30	12/08/04
Annotation SDK/ActiveX/COM	10.30	12/08/04
Cover Page Generator SDK/ActiveX	10.30	12/08/04
Image SDK/ActiveX	10.30	12/08/04
Document Imaging SDK/ActiveX	10.30	12/08/04
Barcode SDK/ActiveX	4.10	10/04/04

Free Software

Product	Version	Date
Impact ColorFax Lite	6.00	07/22/04
Tiff Viewer Plug-in - Free Version	6.00	07/22/04
ModemWeasel	2.00	08/01/02

Internet Tools

Product	Version	Date
Print2Email	3.01	01/20/03
Tiff Viewer Plug-in - Complete	6.00	07/22/04
Print Monitoring Server	2.40	04/02/04