

Black Ice Newsletter

February 2003

What's Inside

Print2Email 3.0	1
Print metering Service	1
New features of Print2Email	3
Version Numbers	4



Print2Email 3.0 with PDF support

Black Ice Software has released the Print2Email version 3.0!

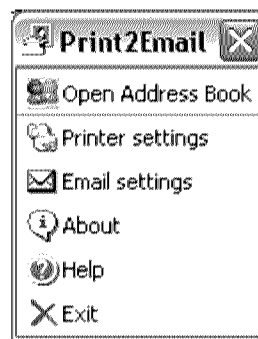
The Print2Email application is targeted at both individuals and businesses to provide a seamless email interface to any windows application.

Print2Email 3.0 is based on the new Black Ice printer drivers, which are the most advanced and fastest image print drivers available on the market. Any printable document can be converted to an image and can be sent as email using Print2Email.

Use the power of the Internet!

Never before was it easier to send documents online! Send your documents to your business partners instantly with one click by printing them through the Print2Email Printer from Black Ice Software, Inc.

How Print2Email works: Simply open the document that you want to send. Print to the Print2Email Printer as you would to any other printer. By default your Inbox, Outlook or Exchange Address book will be



The new Print2Email Control Center

launched and you can select the recipient (see figure 1). Once the recipient has been selected, the e-mail form will open and



Print Metering Server

Black Ice Software released a unique new technology called "Print Metering".

Print metering and monitoring can save millions of dollars for a corporation in hardware, paper, and wasted time. Print Metering gives management an unprecedented power for the first time to analyze,

when a printer is under- or over-utilized. Management can make an accurate forecast based on fact about printer utilization. Most office managers don't have an understanding of how many pages each employee is printing in a year or in a week. What time of the day the printer is used the most or what time of the day the

printer is idle. Since management does not have the critical information of how many pages are being printed and who does the most printing, offices end up with over capacity. Office equipment suppliers routinely "over-sell" expensive high-end printers to their custom-

(Continued on page 3)



BLACK ICE NEWSLETTER is published by Black Ice Software, Inc. The contents of this newsletter in its entirety are Copyright © 2003 by Black Ice Software, Inc. 292 Route 101, Salzburg Square, Amherst, NH 03031, USA. Black Ice Software, Inc. does hereby give permission to reproduce material contained in this newsletter, provided credit is given to the source, and a copy of the publication that the material appears in is sent to Black Ice Software at the above address.
 Phone: (603) 673-1019
 Fax: (603) 672-4112
 E-mail: sales@blackice.com
 www.blackice.com
 ftp.blackice.com

Subscription Service available, call for details.
 Get your subscription to avoid frequent upgrades.

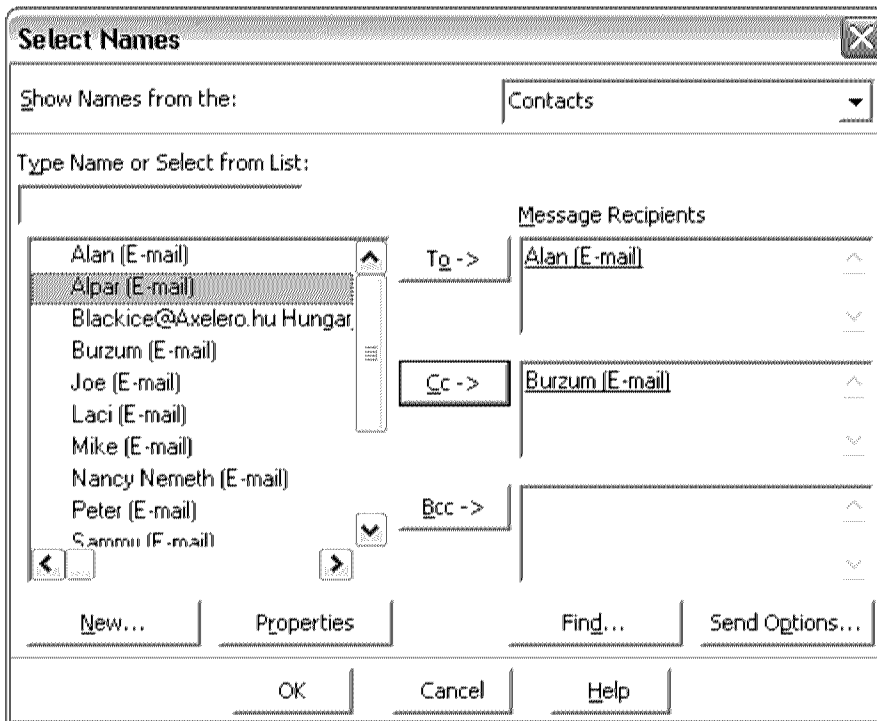


Figure 1

(Print2Email 3.0, continued from page 1)

the document will be automatically converted to an image file and added as an attachment. Click on Send and the email is on the way. Print2Email is fully configurable with many options. It can be set to handle the email recipients in several ways (see figure 2):

- Open the address book every time when an email is being sent
- Send every document to the same e-mail address
- Use the selected email addresses all the time and select additional recipient each time.

Print2Email 3.0 supports converting and sending your document into Adobe

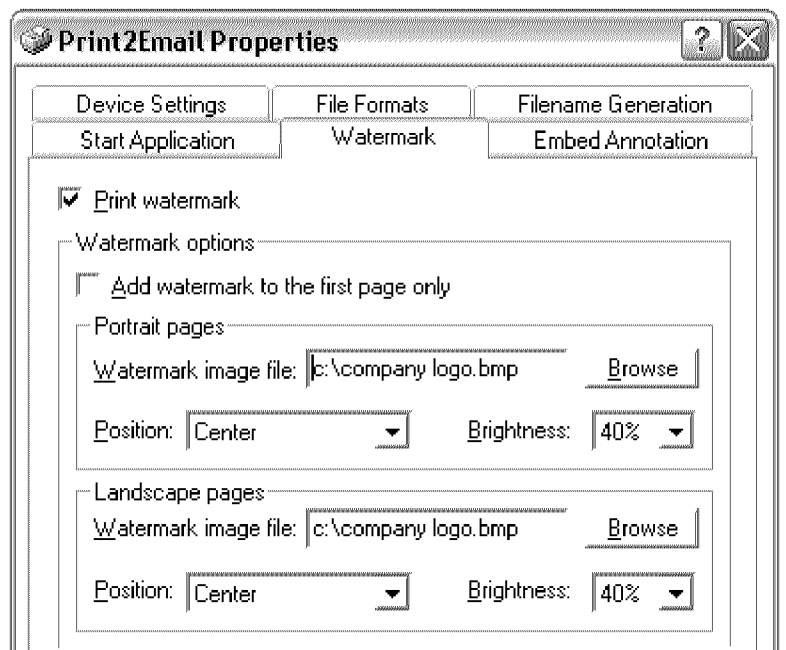
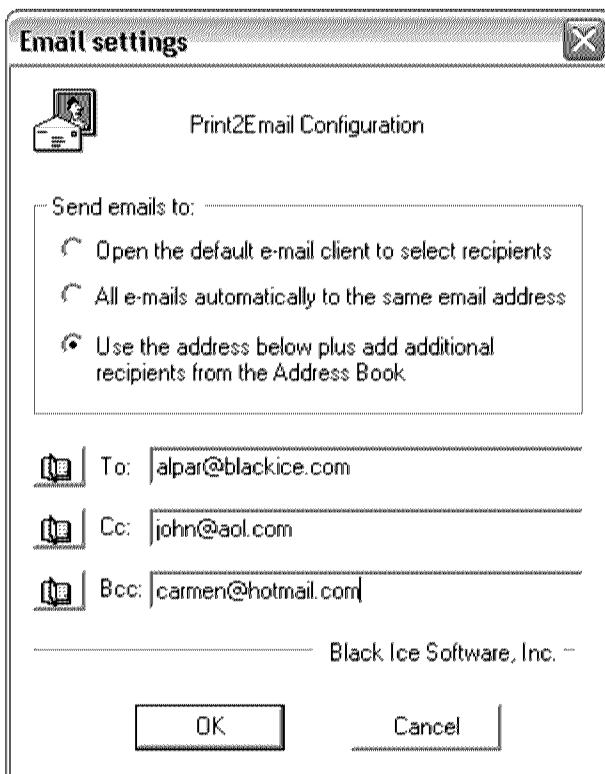


Figure 3.

Figure 2.

PDF (Portable Document Format). Besides PDF format, the documents can be converted and sent in other popular file formats too, such as JPEG, TIFF, BMP and PCX .

Also a document can be converted to monochrome (2 colors), 8 bit (256 colors) or 24 bit (16.6 million colors) images. The image resolution can also be set starting from 50 DPI up to 1500 DPI.

No more problems with finding saved files. Plus, no more emails sent with missing or forgotten attachments. **Built in security!** The

(Continued on page 3)

(Print2Email, continued from page 2)

receiver or any third party cannot change the document you sent. What you send is what they get! **Virus free email attachments!** Even if the original document contained viruses (Word, Excel documents), the generated image file will be virus free! **Easy To Use!** Print2Email has a simple easy to use User Interface. Simply open your document and print the document to the Print2Email printer driver the same way you print to "regular" printers. Next, select the recipients you want to send the document to and you are ready to go.

New features in Print2Email version 3.0 :



- Windows XP and Microsoft Office XP support.
- PDF file format support
- Text extraction from the document. Send text only emails with no attachments
- Fastest document conversion using the new Black Ice Printer Driver
- Watermark support. Print2Email can add watermark to your documents before sending them (figure 3.)
- Annotation support. Print2Email can add different annotations to your documents before sending them, such as custom text, the current date and time (when the document was printed and sent, and many more).

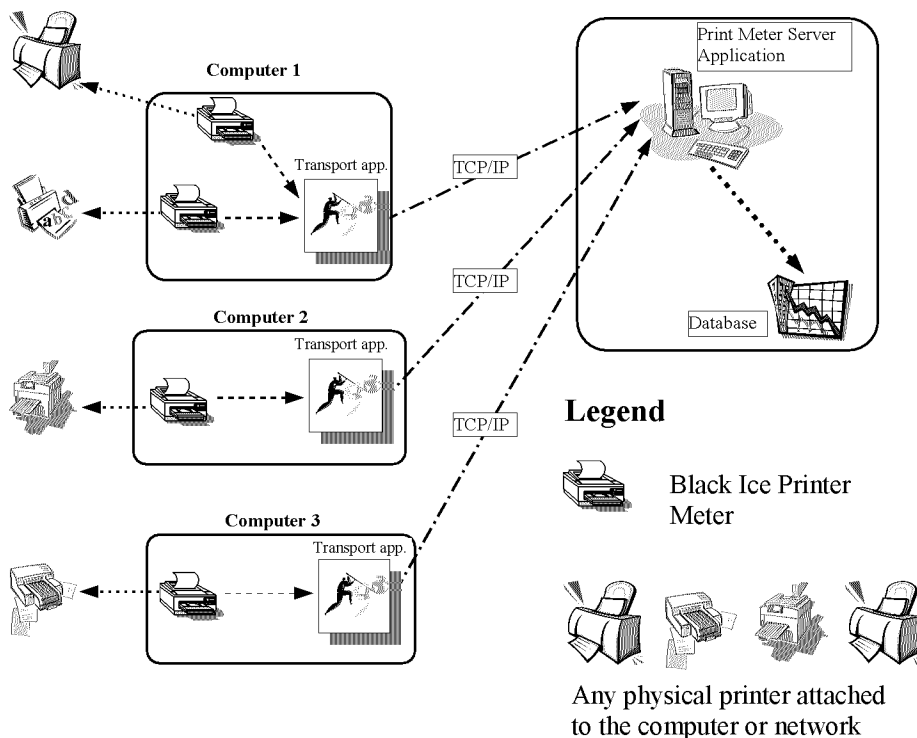
Print2Email will remember these setting so you don't have to enter them again.

(Print Metering Server, cont. from page 1)

ers. With print monitoring, one can quickly and precisely assess an office need and calculate the printer hardware needed for the office. Identifying printing habits of individuals or the office and allocating resources accordingly can reduce paper waste by eliminating reprints and identifying faulty devices. A defective printer with faulty paper feed can cost a lot for an office in wasted time and wasted paper because of frequent paper jams resulting in reprinting. Some additional benefits of print monitoring are document print monitoring for auditing. Law firms and accounting firms can monitor which document is printed, who did the printing, on which printer and when the document is printed.

How does it work ?

The Black Ice Print Metering will collect information about the printing on the fly. The information is transmitted, by the transport module, to the Print Meter Server through TCP/IP. The Print Meter Server can collect data from one or more computer. Finally all data is stored in a database. Periodically reports can be generated from the database to view the utilization of a printer during a time period.



The system administrator can see which printer was used in a given time period, which documents were printed to that printer and how many pages that printer has printed. You can even see which documents have been printed by a specified user during a certain time period, or how many pages a user has printed.

Upcoming topics in the next Newsletter

Some of the upcoming topics for the next newsletter are:

- New version of the popular **Colorfax** application
- Read more details about **Print Archiving**

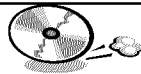


•292 Route 101•
•Amherst, NH 03031 USA•
Tel: (603) 673-1019
Fax: (603) 672-4112
•www.blackice.com•

Inside

New! Print2Email 3.0

Time to upgrade?



Latest Version Numbers

Programming Tools			Impact Products		
Product	Version	Date	Product	Version	Date
Fax C++/OCX	9.08	01/09/03	Impact Fax Server	4.36	12/18/02
Voice C++/OCX	9.08	01/09/03	Impact Voice Mail Server (Standard)	3.14	04/11/01
Mono Printer Driver for Win95/98/ME	5.50	12/29/02	Impact Voice Mail Server (Deluxe)	3.79	04/11/01
Color Printer Driver for Win95/98/ME	5.50	12/29/02	Impact Terminal Fax Server	4.34	05/03/02
Mono Printer Driver for NT/Win2000/XP	7.50	12/29/02	Impact Fax on Demand	4.06	12/01/00
Color Printer Driver for NT/Win2000/XP	7.50	12/29/02	Impact Fax Broadcast	3.0 0	09/06/02
Terminal Server Printer Driver for NT4.0/Win2000	7.50	12/29/02	Impact Fax Pro	4.13	07/26/00
Metafile Printer Driver for Win95/98/ME	5.50	12/29/02	Drag and Drop Printing	2.00	12/24/02
Metafile Printer Driver for NT/W2K/XP	7.50	12/29/02			
Image SDK/OCX	5.56	05/04/01			
Burning Chrome Application Generator	2.00	01/15/01			
Tiff SDK/OCX	9.01	12/18/02			
Annotation SDK/OCX	3.02	12/18/02			
PDF Plug-in for TIFF SDK	2.00	12/31/02			

Internet Tools		
Product	Version	Date
Impact Internet Print Server	3.00	08/22/01
Print2Email	3.00	01/20/03
Tiff Viewer Plug-in - Complete	3.01	03/26/02

Free Software		
Product	Version	Date
Color Fax Lite	2.18	11/21/00
Tiff Viewer Plug-in - Free Version	4.00	09/27/02
ModemWeasel	2.00	08/01/02