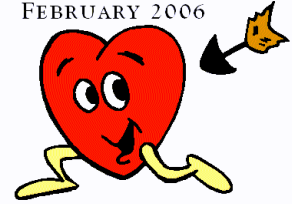


Developer Newsletter



New Email Add-on for the Black Ice Software Printer Drivers

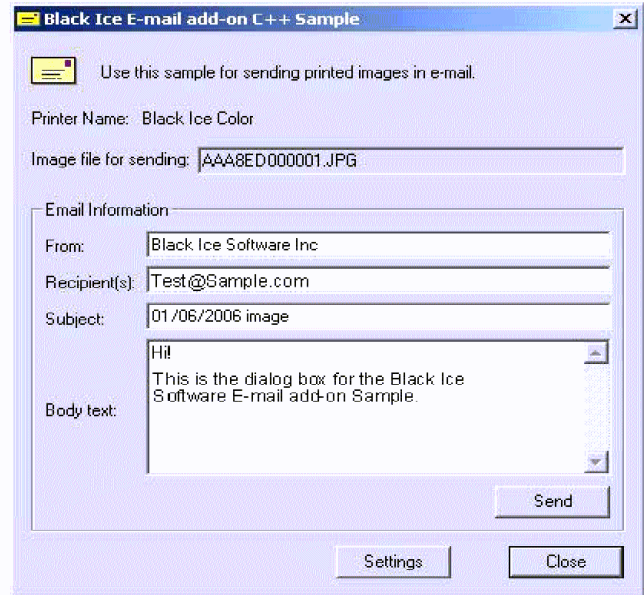


Inside this issue:

New Email Add-on for the Black Ice Printer Drivers	1
New Language Support Added to the RTK	1
New Fax C++ Version 12.10 is Released	1
Replace User Settings Sample	2
Use Document Name for Image Name	2
Tips and Tricks—How to Programmatically set Application Path and Name in the "Start Application" Feature.	3

The Black Ice printer driver Resource Tool Kit includes an **Email Add-on Sample** for the printer drivers. The **Email Add-on Sample** comes with source code and enables developers to write a custom application to programmatically email documents. The automatically converted document will be added to an

(Continued on page 2)



New Language Support Added to the RTK

New language support has been added to the existing sample applications in the resource Tool

Kit. **Replace User Settings** sample, and **Use Document Name** sample, now have language

support for C#, VB.NET and Delphi. See the articles in this newsletter for more details.

New Fax C++ version 12.10 is released

The Black Ice Software Fax C++ /ActiveX Development Toolkit supports Brooktrout release 4.1.0 SDK. For fax developers, TR1034 and TruFax BRI fax hardware modules are fully supported and benefit from Brooktrout's quality and performance improvements made by Brooktrout's

4.1.0 release. Brooktrout's release unifies and brings up to date all operating system environments supported by the TR1000 series product line. Black Ice Software performed system testing using the Black Ice Fax C++ version 12.00 with Brooktrout's 4.1.0 SDK release and transmitted

over 200,000 faxes in a single session without failure!

In addition to supporting Brooktrout's 4.1.0 SDK, Black Ice has added new sample applications. Watch for our March newsletter for more details.

The BLACK ICE NEWSLETTER is published by Black Ice Software, Inc. The contents of this newsletter in its entirety are Copyright © 2006 by Black Ice Software, Inc. 292 Route 101, Salzburg Square, Amherst, NH 03031, USA. Black Ice Software, Inc. does hereby give permission to reproduce material contained in this newsletter, provided credit is given to the source, and a copy of the publication that the material appears in is sent to Black Ice Software at the above address.

Phone: (603) 673-1019
 Fax: (603) 672-4112
sales@blackice.com
www.blackice.com



(Email AddOnContinued from page 1)

email as an attachment. The source code can be modified by developers to satisfy their specific business requirements. The Black Ice Software printer driver supports multiple file formats such as PDF, TIFF, HTML, GIF etc.

How The Email add-on sample application works:

Open the document that you want to send. Print to the Black Ice

printer driver as you would any other printer. The **Email Add-on** sample application will be launched and you can type in the recipient email address. The **Email Add-on** sample application logs in to a specified SMTP email server and sends the converted document as an email attachment. Click on Send and the email is on the way.



Replace User Settings Sample

The printer driver settings can be changed programmatically, at install time or manually by the users. In some cases, to make sure that their application receives the data it expects, the developers need to change the user settings globally for all users.

In order to help developers perform this task, Black Ice developed methods to delete existing user settings, load a default set of settings, and save the settings to the current user of as the defaults.

In the case of restoring the user settings for the current user the steps would be: delete the current user's settings, load the defaults,

and save the settings for the current user. For replacing all user's settings, one should delete all users' settings using the ClearUserSettings() function and passing TRUE for the bAllUsers parameter. Before deleting the printer settings, call the CreateDefaultSettings() function to create a set of default settings. The default settings are loaded from the INI file of the printer driver. If the INI file is not found, or some settings are not present in the INI file, the function will use the hard coded default settings. For settings that can not be hard coded such as color depth and file formats, in case they are not

present in the INI file, the function will use the default settings of the printer currently in use.

In order to store the settings use the SaveDefaultBlackIceDevmode() or SaveCurrentBlackIceDevmode() function, or both if you need to change the default settings and the current user's settings at the same time. Additionally the ReplaceUserSettings() function can be used which combines all the above functionality.

The RTK has just been completed with sample application written in C#, Delphi and VB.NET to show how to use the above functions or methods.

Use Document Name for Image Name

Many custom applications print to the Black Ice printer driver programmatically and then process the generated images. These custom applications expect the file name (of the image) to be the same as the file name of the original printed document. This is not directly possible since printer drivers are not aware of the name of the file

printed by the printing application. All the printing application passes to the printer driver when preparing the print job is a string specifying the document name. In most cases the document name is an application specific string and is not the same as the actual file name.

For example if Microsoft Word prints a file called test.doc, the

document name passed by Microsoft Word to the printer driver will be "Microsoft Word - test.doc" instead of "Test.doc"

Using the BlackIceDEVMODE.dll or BlackIceDEVMODE.ocx controls, developers can solve this issue in a few steps. When printing

(Continued on page 3)

(Use Document Name from page 2)

is done automatically, the printing application knows the name of the file which is going to be printed. Before printing, the application must read the name of the source file. Once you have the name of the source file, use the BlackIceDEVMODE.dll or BlackIceDEVMODE.ocx controls to change the filename generation method to "Use exact filename" and set the output file name using

the SetImageFileName() function to the desired file name. Cutting the extension of the original file, and replacing it with the file extension for the current file type can create the desired file name. Use the GetFileExtension() function to get the current file extension for the currently used file format.

Using these simple steps it is possible to create images having the source document's name. The latest Black Ice Printer Driver RTK includes new samples written in

C#, VB.NET and Delphi which demonstrates the above steps and can be used as a starting point for implementing this functionality in your own application.



Tips and Tricks - How to programmatically set the Application Path and Name in the "Start Application" feature.

The Black Ice Printer Driver stores the settings for the "Start Application" feature in the "Bi*ini**.ini" file. By modifying the LaunchFlags variable of the "Bi*ini**.ini" file you can turn on or off the "Start Application" feature and change the parameters of the feature. A description of the flag settings for the "Start Application" feature is listed below in figure 1.1.

If you want to start an application After Printing and Pass Parameters

to the application then you would set the "LaunchFlags" variable to 13. (BLF_LAUNCHAPP+BLF_PASSPARAMETERS+BLF_STARTNORMAL).

For this example the settings in the "Bi*ini**.ini" file of the printer driver would be:

```
LaunchFlags=13
ApplicationPath = C:\Windows\notepad.exe
```

The "ApplicationPath" variable stores the path and the name of the application.

In this case the notepad application will start after printing a document, and the specified parameters in the pass parameters dialog box will be passed to the notepad application.

NOTE:

*- These characters will vary depending on which printer driver is installed.

Figure 1.1

BLF_LAUNCHAPP	0x00000001	Launch an application
BLF_STARTBEFOREPRINT	0x00000002	Sets the value of the 'Start Before Printing' radio button
BLF_PASSPARAMETERS	0x00000004	Sets the value of the 'Pass Parameters' checkbox
BLF_STARTNORMAL	0x00000008	Sets the value of the 'Normal' radio button. The driver will start the application In a Normal window
BLF_STARTMINIMIZED	0x00000010	The driver will start the application In a Minimized window
BLF_STARTHIDDEN	0x00000020	Sets the value of the 'Hidden' radio button. The driver will start the application Hidden.
BLF_DONOLAUNCHINUSERCONTEXT	0x00000040	the start application won't be launch in the user's security context, otherwise the application starts in the user's security context.