

You're receiving this newsletter because you **SIGNED UP AT [BLACKICE.COM](http://BLACKICE.COM)**  
Having trouble reading this email? [View it in your browser](#). Not interested anymore? [Click Here](#).



[www.blackice.com](http://www.blackice.com)

## What's Inside?

- New feature: Upload to SharePoint®
  - Printer drivers INI file
  - Printing Preferences
  - BlackIceDEVMODE functions
- New Component: Black Ice Printer Manager
- Printer Driver Installation Improvements

## Online Resources



- [Online Documentation](#)
- [Evaluation Downloads](#)
- [Black Ice Newsletter Archives](#)

## Contact Information

<http://www.blackice.com>

Phone: 603-882-7711

Fax: 603-882-1344

## Exclude Me

If you no longer wish to receive this email [please click here](#).

## Black Ice Software - March 2010

### New feature: Upload to SharePoint®

The upload to SharePoint® feature is available in all Black Ice printer drivers from version 12.00. Every printed document can be uploaded automatically after printing to the selected SharePoint® repository. The uploading may be performed silently without user interaction. In this case the logging function is used to save the result of the operation. The following information is needed to upload to a SharePoint® repository: name of the SharePoint® server, user name, password and repository path.

As usual the settings of the SharePoint® uploading can be specified 3 ways: through printer driver's INI file, using printing preferences and programmatically.

### Printer drivers INI file

The SharePoint® settings are described in the Post Print Options section of the printer drivers INI file.

```
[Post Print Options]
; 1: Enable to upload 0: disable the uploading
SharePoint Upload=
; SharePoint® server
SharePoint Server=
; Repository
SharePoint Directory=
; User name
SharePoint User=
; Password
SharePoint Pass=
; 1: enable silent uploading 0: disable
SharePoint Silent=
; Path and name of the log file
SharePoint Logfile=
```

The printer driver's INI file is used to set the default SharePoint® settings at installation time.

### Printing Preferences

The SharePoint® settings can be configured by the user at the FileName Generation tab of Printing Preferences.

### BlackIceDEVMODE functions

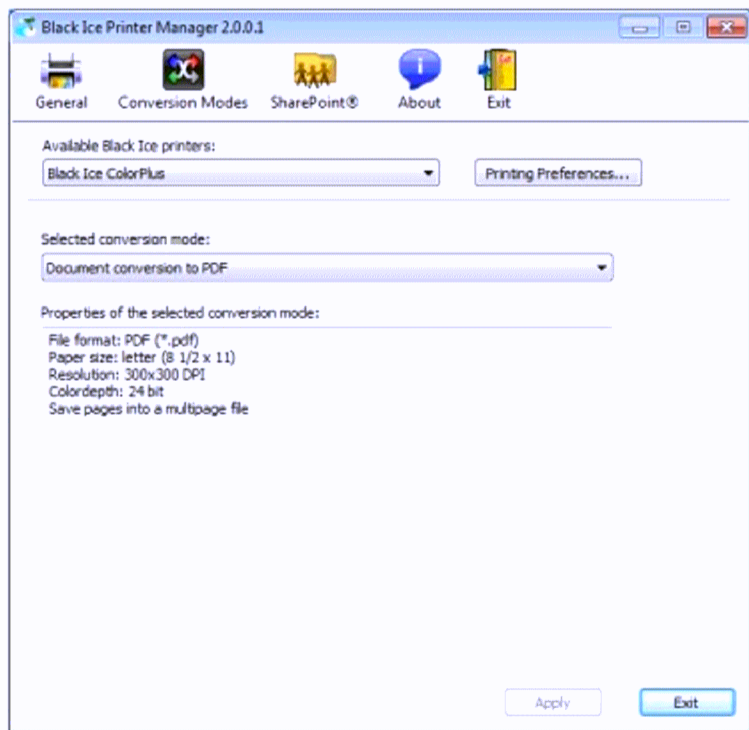
New functions are available in the BlackIceDEVMODE dll and ActiveX control to set the SharePoint® settings. Here is the list of the functions:

IsSharePointUploadEnabled  
SetSharePointUpload  
GetSharePointServer  
SetSharePointServer  
GetSharePointDirectory  
SetSharePointDirectory  
GetSharePointUser  
SetSharePointUser  
GetSharePointPass  
SetSharePointPass  
IsSharePointSilentEnabled  
SetSharePointSilent  
GetSharePointLogfile  
SetSharePointLogfile

For more information about the functions please see the resource toolkit documentation.

## New Component: Black Ice Printer Manager

Black Ice Printer Manager will be installed alongside the non-OEM printer drivers. The Printer Manager will serve as a centralized configuration utility for all Black Ice Printer Drivers.



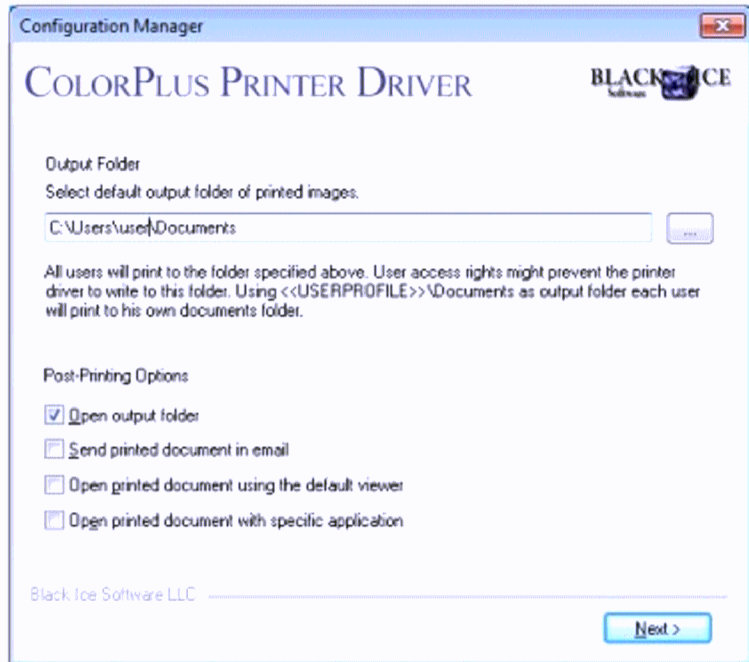
From the Black Ice Printer Manager it will be easy to set all the most commonly used printer driver features in a graphical interface.

Black Ice Printer Manager is automatically installed during the installation of the first Black Ice Printer Driver and it is removed automatically during the uninstallation of the last Black Ice Printer Driver.

We have also increased the number predefined conversion modes and included new commonly used printing modes, e.g. photo printing to JPEG or several faxing conversion modes.

## Printer Driver Installation Improvements

From version 12.00 printer driver install sequence slightly changed. A new window will appear towards the end of the printer driver install to provide the option to set the output folder and several post-printing options:



## Looking for a Fax, Imaging or Printing Solution?

- [Click here for a list of our Fax and Image Development Tools](#)
- [Click here for a list of our Impact Fax and Printing Software](#)