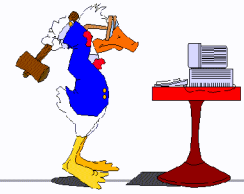


Black Ice Newsletter



Inside this issue:

Linear Barcode SDK/ActiveX - Newly Released	1
Barcode add on for the printer	1
Annotation SDK - New Voice Annotations!	2
New file formats added to the Win 9x drivers	2
Printer Driver Tips and Tricks	2

Linear Barcode SDK/ActiveX - Newly Released!

The Black Ice Linear Barcode SDK/ActiveX is a robust and efficient library of linear 1D barcoding functions, such as reading/decoding, writing, searching barcodes, and detecting barcode orientation. The Black Ice Linear Barcode SDK/ActiveX is written to be image toolkit independent, and can be used with any Black Ice imaging toolkit, such as the TIFF SDK/ActiveX, the Image SDK/ActiveX, or the Document Imaging SDK/ActiveX. It can also be used

with any third party imaging platform.

The Black Ice Linear Barcode SDK/ActiveX will consist of a set of DLLs and ActiveX controls, allowing developers to use a variety of programming languages including C/C++, VB, Delphi, C#, J#, VB .NET and more.

The Black Ice Linear Barcode SDK/ActiveX provides developers with



complete control over every aspect of reading, writing, and decoding barcodes. The Black Ice Linear Barcode SDK/ActiveX provides functionality to read specific barcode types, or developers can use a single function to read any supported barcode type.

Since barcodes are often dirty, or otherwise imperfect, all of the Black Ice Linear Barcode SDK/ActiveX reading/decoding functions perform advanced,

(Continued on page 2)

BLACK ICE NEWSLETTER is published by Black Ice Software, Inc. The contents of this newsletter in its entirety are Copyright © 2004 by Black Ice Software, Inc. 292 Route 101, Salzborg Square, Amherst, NH 03031, USA. Black Ice Software, Inc. does hereby give permission to reproduce material contained in this newsletter, provided credit is given to the source, and a copy of the publication that the material appears in is sent to Black Ice Software at the above address.

Phone: (603) 673-1019
Fax: (603) 672-4112
E - m a i l :
sales@blackice.com

www.blackice.com
[ftp.blackice.com](ftp://ftp.blackice.com)

Barcode add on for the printer drivers— Coming Soon!

In addition to providing barcode functionality for developers who utilize imaging toolkits, Black Ice will also provide an optional barcode add-on for the Black Ice printer drivers. The forthcoming printer driver barcode add-on will allow Black Ice printer driver customers to automatically add barcodes to any Black Ice printer driver printjob. Developers will

be able to programmatically control the barcode type, the information encoded within the barcode, and the position on the page. Developers will also have the option to add barcodes to every page of the document, or just the first page. As with all of the Black Ice printer driver features, developers can programmatically specify settings, allow users to

specify settings, or developers can hide the barcode tab completely.

The Barcode add on for the Black Ice printer drivers will include both DLLs and ActiveX controls, allowing developers to utilize the features with a wide range of programming languages including C/C++, VB, C#, J#, VB .NET, Delphi and more!

Subscription Service available for Printer Drivers, call for details.
Get your subscription to receive the latest technologies and upgrades!

(Linear Barcode... - Continued from page 1)

high level error correction internally to correct these situations. Additionally, the Black Ice Linear Barcode SDK/ActiveX can read any skewed barcode, since barcodes are rarely ever perfectly horizontal. Enhanced error correction and the ability to read skewed barcodes ensures developers that they will be able to read and correctly decode any supported barcode types.

Supported Barcode standards

The Black Ice Linear Barcode SDK/ActiveX currently supports the following linear barcode formats:

Linear Binary barcodes

- Codabar
- Code 11
- Code 3 of 9
- EAN 8
- EAN 13

- Industrial 2 from 5
- Interleave 2 from 5
- Matrix 2 from 5
- Plessey
- Linear Non-binary barcodes
 - Code 128
 - UPC-A
 - UPC-E

Future releases of the Black Ice Linear Barcode SDK/ActiveX will add support for additional barcode types, including PDF417, DataMatrix, and other 2D barcodes.

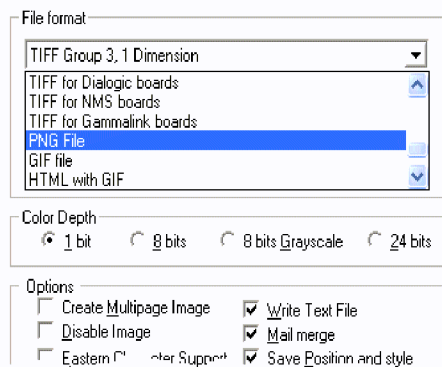
Annotation SDK - New Voice Annotations!

A powerful new feature has been added to the Annotation SDK/ActiveX: Voice annotation! You can create an annotation object that will play sound file (wave) when the user clicks on it. This feature will make the user experience of your products even better than before. Possible uses include interactive help files, application user interfaces and more.

Adding a voice annotation to an image is easy, simply add the Voice object, just like any other annotation object, and specify the sound file to be used. The Voice Annotation objects are a new feature available in version 10.11 and higher of the Annotation SDK/ActiveX and Document Imaging SDK/ActiveX. Be sure to download the latest evaluation version from the Black Ice web site and try the new Voice Annotations for yourself!

New file formats added to the Win 9x printer drivers

The list of file formats supported by the Black Ice printer driver for Windows ME, Windows 98 and Windows 95 have been extended with 9 additional file formats.



The new file formats include:

GIF, PNG, TIFF for Dialogic boards, TIFF for NMS boards, TIFF for Gammalink boards, HTML with JPEG, HTML with PNG, HTML with GIF and HTML with BMP.

Printer Driver Tips and Tricks

Using the Force DPI option

The Black Ice printer drivers support a wide range of DPI values (resolutions) from 50 up to 3000 DPI.

The printing applications can use any of the above DPI range to print the documents. Some printing applications use the system's default printers' DPI when a new document is created, other applications such as Word and Excel save the printer settings directly into the document when the document is saved. When the document is printed, the printing application will try to use the DPI settings saved within the document, regardless of the DPI settings of the selected printer, this way trying to make sure that the printed document will look the same.

If the printer doesn't support the DPI that the printing

(Continued on page 3)

Printer Driver Tips & Tricks (*Continued*)

(Using the force DPI... - Continued from page 2)

application is using, the application will reformat the document in order to print it correctly.

If the printer supports the DPI used when the document was created, the application will print the document using the DPI values saved in the document, ignoring the actual DPI setting of the printer.

This behavior of the printing application can create confusion. For example, if you set the Black Ice printer to use 300x300 DPI, but your Excel document was created on a machine where the default printer is set to use 600x600 DPI, Excel will ignore the 300x300 DPI set for the Black Ice printer and it will print the document with its 600x600 DPI resolution. The result is a 600x600 DPI image file regardless that you set the Black Ice printer to use a different DPI value.

The solution to this issue is to use the “Force printer DPI” feature of the Black Ice printer driver. Using this feature, the output image will always have the required DPI (resolution) regardless of the printing application’s and the document’s settings, without even reformatting the document.

Error number 1796 and 1801.

A few of Black Ice customers have reported receiving error 1801 (The printer name is in-

valid.) or error 1796 (The specified port is unknown) during printer driver installation.

The result of our investigations was that both issues are connected. When the printer driver is being installed, the setup will attempt to create a port on the system. In order to create a new port, the setup must access specific registry keys.

It turned out, that none of our customers who experienced this issue had write access to the required registry keys, even though the user was administrator on the system. The setup couldn’t write the registry and the installation failed.

The solution to this issue is to make sure that you have write access rights enabled for the following registry keys:

```
HKEY_LOCAL_MACHINE\SYSTEM\CurrentControlSet\Control\Print\Monitors\
```

```
HKEY_LOCAL_MACHINE\SYSTEM\CurrentControlSet\Control\Print\Environments\Windows NT x86\Drivers\Version-2\
```

```
HKEY_LOCAL_MACHINE\SYSTEM\CurrentControlSet\Control\Print\Environments\Windows NT x86\Print Processors\
```

```
HKEY_LOCAL_MACHINE\SYSTEM\CurrentControlSet\Control\Print\Printers
```

Print to file option

Printing to the Black Ice driver creates image files by default. The ‘Print to file’ option is not supported by the Black Ice printer drivers. Also, if you are using OLE automation such as automated printing from Word, Excel or other products, make sure that you are not using the ‘Print to file’ option.

The PrintOut method of the Microsoft Office products’ OLE object applies to the Application, Document, and Window objects, and has absolutely nothing to do with the Black Ice printer drivers. The “**OutputFileName**” parameter of the PrintOut method is specific to the printing application, and it has nothing to do with the name of the output image file generated by the Black Ice printer driver.

```
expression.PrintOut
(Background, Append, Range,
OutputFileName, From, To,
Item, Copies, Pages,
PageType, PrintToFile, Col-
late, FileName, Ac-
tivePrinterMacGX, ManualDu-
plexPrint, PrintZoomColumn,
PrintZoomRow, PrintZoomPa-
perWidth, PrintZoomPaper-
Height)
```

By setting the *COleVariant* (“C:\\Test.pdf”), parameter for the PrintOut method tells the printer to try and print the document using the “Print to file” option, and the printing will fail.

Inside

**New Barcode SDK
Voice Annotations and New Win 9X Printer Drivers**



April Newsletter

Time to upgrade?  Latest Version Numbers

Printer Drivers

Fax, Voice and Image Toolkits

Product	Version	Date	Product	Version	Date
Color Printer Driver for Win95/98/ME	5.61	03/26/04	Fax C++/ActiveX/COM	10.03	01/21/04
Metafile Printer Driver for Win95/98/ME	5.61	03/26/04	Voice C++/ActiveX/COM	10.03	01/21/04
Mono Printer Driver for Win95/98/ME	5.61	03/26/04	Tiff SDK/ActiveX/COM	10.11	03/25/04
PDF Printer Driver for Win95/98/ME	5.61	03/26/04	Annotation SDK/ActiveX/COM	10.11	03/25/04
Mono Printer Driver for NT/Win2000/XP	8.60	02/22/04	Fax Cover Page Generator SDK/ActiveX	10.11	03/25/04
Color Printer Driver for NT/Win2000/XP	8.60	02/22/04	Image SDK/ActiveX	10.11	03/25/04
Mono Printer Driver for NT/W2K/XP	8.60	02/22/04	Document Imaging SDK/ActiveX	10.11	03/25/04
Metafile Printer Driver for NT/W2K/XP	8.60	02/22/04	Barcode SDK/ActiveX	2.00	03/25/04
PDF Printer Driver for NT/W2K/XP	8.60	02/22/04			
Terminal Server Printer Drivers/Win2003	8.60	02/22/04			

Free Software

Impact ColorFax Lite	6.51	02/21/03
Tiff Viewer Plug-in - Free Version	5.00	03/26/03
ModemWeasel	2.00	08/01/02

Impact Products

Product	Version	Date
Impact Fax Server	4.36	12/18/02
Impact Fax on Demand	4.06	12/01/00
Impact Fax Broadcast	3.50	02/22/04
Impact ColorFax	5.50	02/22/04
Drag and Drop Printing	2.00	12/24/02

Internet Tools

Print2Email	3.01	01/20/03
Tiff Viewer Plug-in - Complete	5.01	06/26/03
Print Monitoring Server	2.20	09/05/03