

Black Ice Software, Inc.

**Inside this issue:**

Windows 2003 Server supported	1
TIFF SDK - Punch hole removal	1
TWAIN 1.9 and batch scanning support in the TIFF SDK	1
Optimized Black Ice Printer Drivers	3
Image SDK for Document Imaging	3



BLACK ICE NEWSLETTER is published by Black Ice Software, Inc. The contents of this newsletter in its entirety are Copyright © 2003 by Black Ice Software, Inc. 292 Route 101, Salzburg Square, Amherst, NH 03031, USA. Black Ice Software, Inc. does hereby give permission to reproduce material contained in this newsletter, provided credit is given to the source, and a copy of the publication that the material appears in is sent to Black Ice Software at the above address.  
 Phone: (603) 673-1019  
 Fax: (603) 672-4112  
 E-mail: sales@blackice.com  
 www.blackice.com  
 ftp.blackice.com

# Black Ice Newsletter

Volume 8, Issue 6

June 2003

## Windows 2003 Server Supported by the Printer Drivers!

Black Ice Software recently released version 8.04 of the Terminal Server printer driver. The new version fully supports the new Microsoft Windows Server 2003 operating system family including Windows Server 2003 Standard Edition, Enterprise Edition and Datacenter Edition.

Black Ice also continues to support the Windows 2000

Server, NT4.0 Terminal Server and Citrix Metaframe systems with the Terminal Server printer drivers.

Terminal server users can print to the Black Ice printer driver from any application that can print. The printed documents will be converted into images and saved in the specified folder. If needed, a sepa-

rate folder can be specified for each user, this way preserving the confidentiality of the converted documents. The printer driver can also start an application before the printing begins or after the printing has finished. The application will be launched using the printing user's rights and privileges.

## TIFF SDK - Automatic Punch Hole Removal Available!

Punch holes have long presented a problem in scanned documents. Removing punch hole marks from documents always was a tedious, manual process.

To compensate for this, an automated punch hole re-

moval algorithm has been added to the already extensive feature list of the Black Ice TIFF SDK. This powerful feature allows developers to create automated document imaging applications.

It is a common problem

that the scanned images shows the locations of the holes created by the hole puncher on the documents. Removing the black marks had to be done manually, for each page, by opening the image and erasing the

*(Continued on page 2)*

## TWAIN 1.9 and batch scanning support in the TIFF SDK

The latest release of the TIFF SDK, Annotation SDK and Image SDK contain several new scanning related features and improvements.

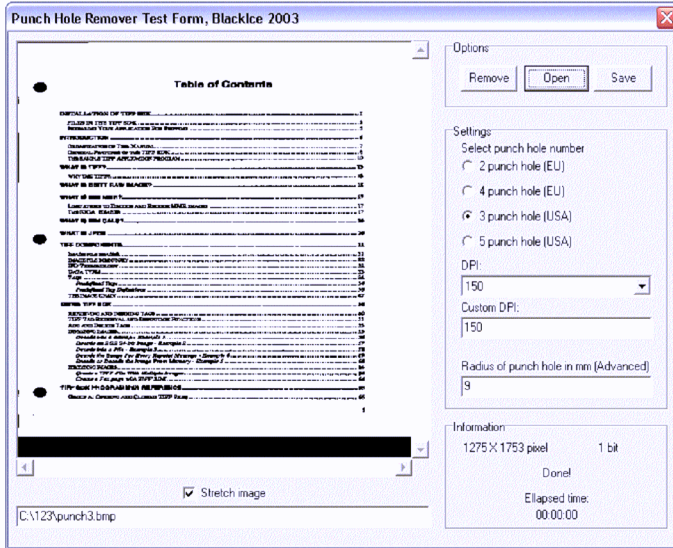
Scanning support is now based on the latest TWAIN

1.9 drivers. With the latest drivers, application developers now have total control on almost every aspect of the scanning process. Parameters that affect the way that documents are being scanned can be re-

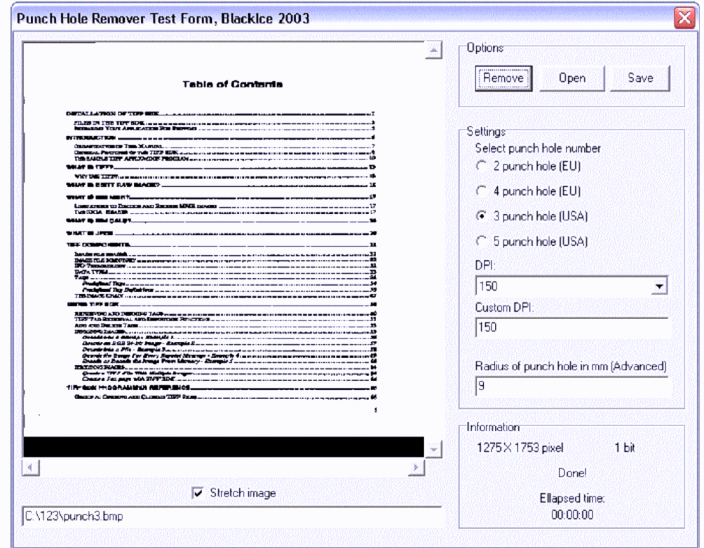
trieved and changed. Applications now can set the brightness and contrast of the scanned documents, they can specify the area of the document that should be scanned and they have

*(Continued on page 2)*

**Subscription Service available, call for details.**  
 Get your subscription to receive the latest technologies and upgrades!



Before removing punch holes



After removing punch holes

(TIFF SDK - Punch hole removal - Continued from page 1)

black dots from the side of the image. This process was slow, time consuming and highly inefficient.

The new RemovePunchHoles() function will automatically detect the location of the punch holes on the image, and will remove them in a blink

of an eye. The function will work for most common hole puncher standards. It will remove the 3 and 5 hole marks created by the US hole punchers and also will remove the 2 and 4 hole marks created by European hole punchers.

The function will automatically detect the DPI (resolution) of the image. As an advanced setting, for spe-

cial cases, the diameter of the punch holes can be specified as a parameter.

By combining the new punch hole remover feature from the TIFF SDK with automated document scanning will make the document image processing a fully automated task, which will not require any user interaction.

(TWAIN - Continued from page 1)

control over the resolution and the color depth of the scanned image. They can even turn on and off the use of the document feeder that some newer scanners have.

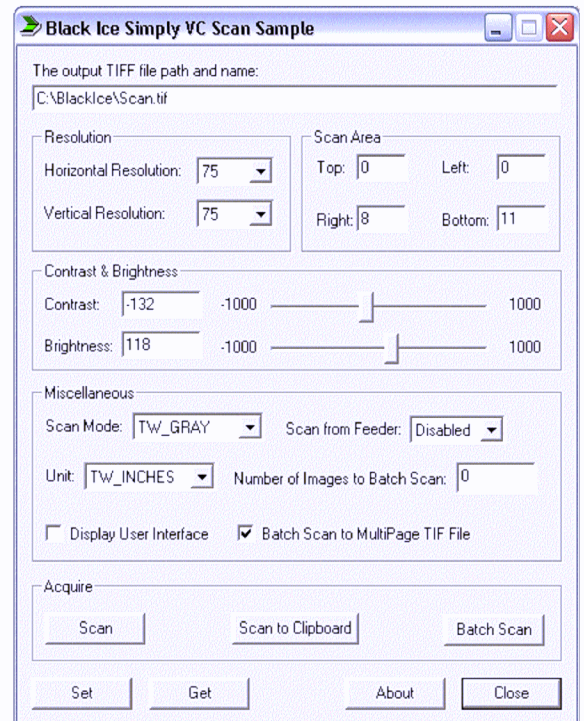
**TIFF SDK now supports batch and automated scanning**

One of the most important features added to the product is its capability to do automated scanning. Automated scanning means that applications can do the scanning automatically without any user interaction. The parameters of the scanner can be

retrieved and changed programmatically by the application.

If needed, applications can also display their own window to let the user change the scanner's settings or they can display either the Black Ice Scanner Interface dialog from the BiDlgs32.dll or the scanning window from the scanner's driver.

Another important new addition to the TIFF SDK's scanning support is its batch scanning capability. Today's modern scanners are equipped



(*TWAIN - Continued from page 2*)

with a document feeder and through the document feeder it is possible to scan in hundreds of documents in one single session. The user inserts the documents into the document feeder, starts the scanning process and the scanner will scan the documents one after another.

The TIFF SDK makes batch scanning easy. The user simply specifies

how many documents he/she wants to scan in, load the documents into the document feeder of the scanner and TIFF SDK will do the rest. The scanned documents will be saved into several single-page or one multi-page TIFF file.

And this is not all. When batch scanning is combined with other powerful TIFF SDK document imaging features like de-skew, black border

removal or punch hole removal, the result will be a totally automated document processing system.

The TIFF SDK comes with sample applications written in C++ and Visual Basic that demonstrate the new scanning features.



## Black Ice Printer Drivers optimized for faster printing !

Printing using the RAW data type has been significantly improved in version 8.04 of the printer drivers. The most important and most noticeable difference is the speed of the printing. The new printer driver compared to older versions prints much faster than earlier versions.

When printing documents with the printer driver, there are several factors that affect the speed of the printing. The factors that have the most affect on the printing speed are the resolution and the paper size. Bigger

resolution and bigger paper size means that the generated image will have more pixels in it, therefore the amount of data that the printer driver must process is much larger.

The dithering algorithm used when Photo Quality is enabled requires a very high number of computations and it is very time consuming. These algorithms produce spectacular results when printing photos or documents with lot of images on them, but in some cases, like when printing office documents with mostly text, there will be no visible difference between the Photo quality and the non Photo quality modes. For office

documents it is recommended to disable Photo Quality, because the speed of the printing will grow significantly.

RAW data type is supported by Black Ice printer drivers since version 8.0. Print jobs printed with RAW data type are processed differently that print jobs printed with the EMF data type. Some applications such as Quicken or QuickBooks support printing only by using the RAW data type. Also, printing with the RAW data type is useful when printing from Adobe Acrobat Reader in some particular cases.

## Image SDK for Document Imaging

Black Ice Software has decided, to re-release the Image SDK product as the "Image SDK for Document Imaging".

The addition of many new features, besides the existing ones, will enhance the product to become a sophisticated development tool that allows developers to create document imaging, automated image processing, faxing, etc. applications. The new features will include several im-

age enhancing algorithms (filters), static noise cleaning functions, punch hole removal, improved scanning features and many more.

The "Image SDK" product is renamed to "Image SDK for Document Imaging"

Additionally the new Image SDK for Document Imaging will contain a variety of new sample applications, that will demonstrate the new capabilities and features.

The product will be fully .NET compatible also and there will be sample source code provided written in C#, VB.NET and J#.

The Image SDK for Document Imaging will become available later this summer.

## Upcoming topics in the next Newsletter

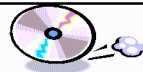
- Printer Drivers
- Document Imaging
- Web based Imaging

•292 Route 101•  
 •Amherst, NH 03031 USA•  
 Tel: (603) 673-1019  
 Fax: (603) 672-4112  
 •www.blackice.com•

**Inside**

## Windows 2003 Server supported by the printer drivers!

**Time to upgrade?**



**Latest Version Numbers**

Programming Tools			Impact Products		
Product	Version	Date	Product	Version	Date
Fax C++/ActiveX/COM	9.14	04/25/03	Impact Fax Server	4.36	12/18/02
Voice C++/ActiveX/COM	9.14	04/25/03	Impact Voice Mail Server (Standard)	3.14	04/11/01
ColorPrinter Driver for Win95/98/ME	5.54	05/02/03	Impact Voice Mail Server (Deluxe)	3.79	04/11/01
Metafile Printer Driver for Win95/98/ME	5.54	05/02/03	Impact Terminal Fax Server	4.34	05/03/02
Mono Printer Driver for Win95/98/ME	5.54	05/02/03	Impact Fax on Demand	4.06	12/01/00
PDF Printer Driver for Win95/98/ME	5.54	05/02/03	Impact Fax Broadcast	3.03	03/17/03
Mono Printer Driver for NT/Win2000/XP	8.04	05/30/03	Impact ColorFax	5.01	02/21/03
Color Printer Driver for NT/Win2000/XP	8.04	05/30/03	Drag and Drop Printing	2.00	12/24/02
Mono Printer Driver for NT/W2K/XP	8.04	05/30/03			
Metafile Printer Driver for NT/W2K/XP	8.04	05/30/03			
PDF Printer Driver for NT/W2K/XP	8.04	05/30/03			
Terminal Server Printer Driver for NT4.0/Win2000	8.04	05/30/03			
Tiff SDK/ActiveX/COM	9.08	05/30/03			
Annotation SDK/ActiveX/COM	3.08	05/30/03			
TIFF SDK w/ Cover Page Generator	9.08	05/30/03			
PDF Plug-in for TIFF SDK	2.10	05/02/03			
Image SDK/OCX	5.58	05/04/01			
			Internet Tools		
			Print2Email	3.01	01/20/03
			Tiff Viewer Plug-in - Complete	5.00	03/26/03
			Print Monitoring Server	2.00	02/10/03
			Free Software		
			ColorFax LITE	5.01	02/21/03
			Tiff Viewer Plug-in - Free Version	5.00	03/26/03
			ModemWeasel	2.00	08/01/02