

Black Ice Newsletter

BLACK ICE
SOFTWARE, INC.

Volume 9, Issue 7

July, 2004

Happy Fourth of July!

Inside this issue:

New - One Function Install for the Black Ice printer drivers	1
New - Data Matrix Barcode Toolkits Released!	1
Fax C++/ActiveX Quick Tip - Retrieving the number of lines of a fax transmission	2
HTTP Printing Support announced for the Black Ice Printer Drivers	3



BLACK ICE NEWSLETTER is published by Black Ice Software, Inc. The contents of this newsletter in its entirety are Copyright © 2004 by Black Ice Software, Inc. 292 Route 101, Salzburg Square, Amherst, NH 03031, USA. Black Ice Software, Inc. does hereby give permission to reproduce material contained in this newsletter, provided credit is given to the source, and a copy of the publication that the material appears in is sent to Black Ice Software at the above address.

Phone: (603) 673-1019
Fax: (603) 672-4112
E-mail: Sales@blackice.com

www.blackice.com

New - "One Function Install" for the Black Ice printer drivers.

Creating an installation for a printer driver can be a challenge. Black Ice Software provides a Resource Toolkit with the release versions of the Black Ice printer drivers. Among other things, the Resource Toolkit contains a sample Install Shield script and an Install DLL containing several functions that can be used to simplify printer installation, and these two items have so far helped developers to create installations for their product.

In the continuous effort to make our products easier to use, Black Ice has released a new version of the Install DLL and the Install Shield Sample.

The new version of the Install DLL focuses on developers who cannot or do not want to use Install Shield to build their installation. Using the new Install DLL, developers can install the printer driver using only a single function call to the `dInstallBlackIcePrinter()` function.

The `dInstallBlackIcePrinter()` function

takes 13 parameters such as printer name, processor name, port monitor name, names of the driver files etc. This function will add to the system the print processor, the port monitor, the printer port, the printer driver and finally the printer itself. It will also create all of the necessary registry entries and will set up the necessary registry security settings.

The `dInstallBlackIcePrinter()` function expects all of the necessary driver files to be previously copied to the target locations by the setup application before calling the function.

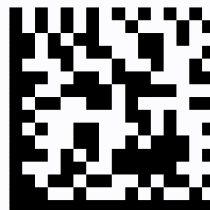
Once the `dInstallBlackIcePrinter()` function has finished, the printer driver is installed on the system. The printer driver will be installed using the default settings specified in the INI file.

If the developer needs to, he can change the printer settings using functions from the `BlackIceDEVMODE` DLL or `ActiveX`

(continued on page 2...)

New - Data Matrix Barcode Toolkits Released!

Black Ice Software is proud to announce the release of both a Data Matrix Read and Data Matrix write module for the Black Ice Barcode SDK/ActiveX. The Data Matrix Barcode modules are imaging toolkit independent, and as such can be used with any Black Ice or third party imaging toolkit.



Black Ice

Data Matrix barcode support is provided by Black Ice in two separately licensed products: one for Data Matrix reading/decoding, and a second for Data Matrix writing/encoding.

Data Matrix barcodes can store large amounts of data in a small

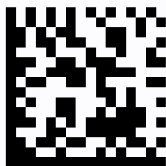
(continued on page 2...)

Subscription Service available for Printer Drivers, call for details.
Get your subscription to receive the latest technologies and upgrades!

Data Matrix Barcode, Continued from Page 1.

symbol, up to a maximum 3,116 Digits or 2,335 ASCII characters. Unlike linear (1D) barcodes, which are typically used to store a record or account number which then must be retrieved from a database in order to get additional information, Data Matrix barcode symbols can typically store all of the information associated with a particular record. This way, using Data Matrix barcodes, developers can eliminate database information retrieval, and can simply read all account details from the Data Matrix barcode symbol itself.

A Data Matrix Barcode symbol is square and when printed can range from 0.001 inch per side up to 14 inches per side. Data Matrix barcode symbols can store much more information in a smaller space. Below is a sample Data Matrix barcode symbol and Code 128 1D barcode Symbol, both of which contain the string "Black Ice", both created using the Black Ice Barcode SDK/ActiveX modules:



The Data Matrix barcode is noticeably smaller even when storing small amounts of data.

The Black Ice Data Matrix Barcode modules support the following features:

- High Density Data Encoding/Decoding
- Read/Write at any orientation
- Read/Write in any direction
- Read from/Write to a region of interest.
- Read/Write skewed barcodes
- Read/Write multiple barcode symbols.
- Checksum character handling.

Some typical uses for Data Matrix Barcodes include:

- **Document Imaging**
Documents with a Data Matrix symbols do not require OCR processing, all the information is available from the barcode symbol.
- **Fax Reports**
Create reports with Data Matrix barcode symbols and fax them to a central station. Built in error correction ensures that there is no data loss and a Data Matrix barcode symbol is smaller than the text itself, so fax transmission is quicker
- **Medical**
Eliminate database lookup by adding Data Matrix symbols with all of the details to a specimen or drug.
- **Warehouse Processing**
A label on a box details the contents.

Developers can download a fully functional evaluation version of the Black Ice Barcode SDK/ActiveX demo from the Black Ice Website at <http://www.blackice.com>. The Barcode SDK/ActiveX demo includes support for Data Matrix Reading, Data Matrix Writing, and Linear 1D barcode reading and writing.

Fax C++/ActiveX Quick Tip

Retrieving the number of lines of a fax transmission

To get the length of a received fax, use the `GetObjFromReceiveQueue()` function to get the received fax from the queue. The function returns a `FAXOBJ` type (a fax object).

Use the `GetParam()` function of the fax object to retrieve the information about the received fax.

```
TSFaxParam sFaxParam;
FaxObj->GetParam( sFaxParam );
```

The `TSFaxParam` structure contains information such as the Resolution, Width, Length, Compression, etc.

One Function Install, Continued from Page 1.

control. The `BlackIceDEVMODE` DLL and ActiveX control are also parts of the Black Ice Printer Driver Resource Toolkit (RTK) and include more than 300 functions to read and change every printer setting.

The `dInstallBlackIcePrinter()` function can be called from install scripts or different programming languages such as Visual Basic, C#, etc., opening new possibilities for our clients.

Visit the Black Ice Website at <http://www.blackice.com> for more details on the Black Ice printer Drivers and Resource Toolkits. Maintenance Subscribers, please contact the Black Ice Sales department to request your free upgrade to the latest printer drivers with the new one function install.

HTTP Printing Support announced for the Black Ice Printer Drivers

In addition to supporting a variety of advanced imaging features such as watermarks, annotations, Bates numbering, etc., the Black Ice printer drivers also support features found in "common" physical printer drivers, such as the ability to share and print over a network. Black Ice Software is proud to announce additional remote printing functionality in the Black Ice Printer Drivers in the form of HTTP Printing.

HTTP Printing is the ability of a printer to be accessed, printed to and controlled remotely via an HTTP connection.

In order to take advantage of the powerful HTTP Printing feature, you must first perform a few steps:

1. Install the Black Ice Printer Driver on a PC with IIS installed and configured.
2. Switch the Black Ice Printer Driver to use the RAW data type
3. Share the Black Ice Printer Driver so it can be accessed.

After completing the three above steps, the Black Ice Printer Driver is ready to be used for HTTP Printing. To access the Black Ice Printer Driver through HTTP, you can use the following

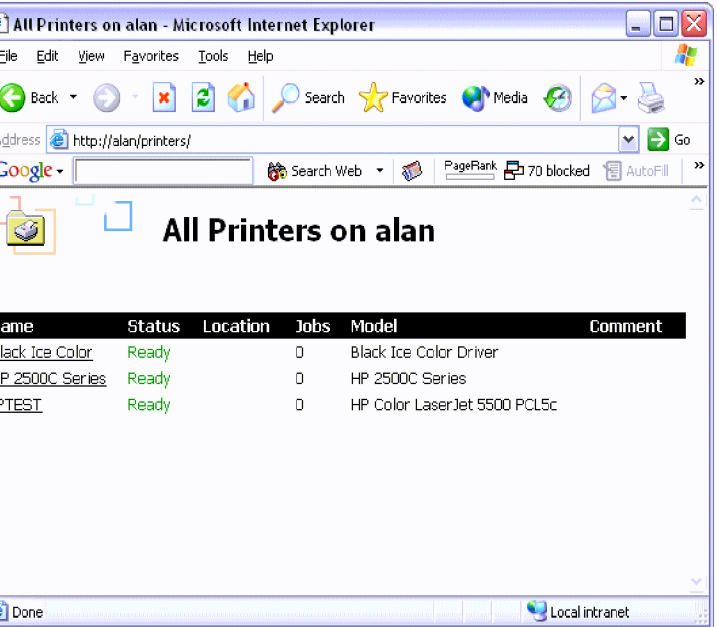


FIGURE 1

steps:

1. Open a web browser
2. Enter the following line in the address bar, substituting either the PC name or IP Address for PCNAME: <http://PCNAME/Printers>
3. This will display a screen similar to **FIGURE 1**.
4. You can connect to the Black Ice printer driver by clicking on the appropriate printer link, for example **Black Ice Color**. Connecting to the printer will allow you to print to the shared printer from your client PC.

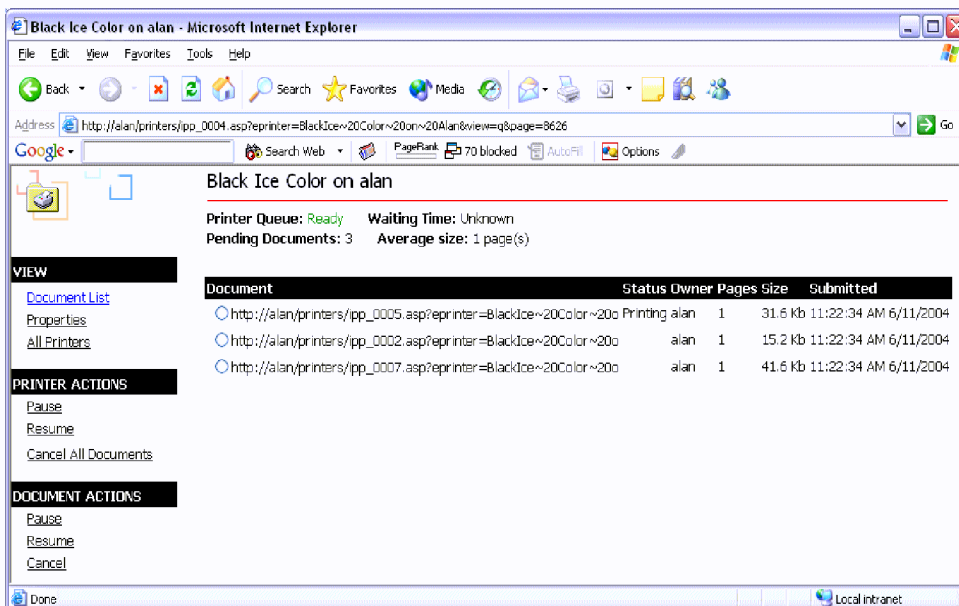


FIGURE 2

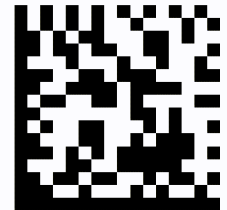
Using the Web interface you can view the status of the printer and its print jobs, jobs can be paused/cancelled and more. **FIGURE 2** is a sample of what the HTTP printing interface looks like.

Visit the Black Ice Website at <http://www.blackice.com> for additional information about the Black Ice printer drivers, download the latest evaluation copy and try HTTP Printing for yourself.

•292 Route 101•
 •Amherst, NH 03031 USA•
 Tel: (603) 673-1019
 Fax: (603) 672-4112
 •www.blackice.com•

Inside

**New - One Function Install for the Printer Drivers,
 New - Data Matrix Barcode toolkits and more...**



Black Ice

Time to upgrade?



Latest Version Numbers

Printer Drivers

Product	Version	Date
Color Printer Driver for Win95/98/ME	5.62	04/20/04
Metafile Printer Driver for Win95/98/ME	5.62	04/20/04
Mono Printer Driver for Win95/98/ME	5.62	04/20/04
PDF Printer Driver for Win95/98/ME	5.62	04/20/04
Mono Printer Driver for NT/Win2000/XP	8.70	06/15/04
Color Printer Driver for NT/Win2000/XP	8.70	06/15/04
Mono Printer Driver for NT/W2K/XP	8.70	06/15/04
Metafile Printer Driver for NT/W2K/XP	8.70	06/15/04
PDF Printer Driver for NT/W2K/XP	8.70	06/15/04
Terminal Server Printer Drivers/Win2003	8.70	06/15/04

Impact Products

Product	Version	Date
Impact Fax Server	4.36	06/18/04
Impact Fax on Demand	4.06	12/01/00
Impact Fax Broadcast	3.51	05/13/04
Impact ColorFax	5.51	05/20/04
Drag and Drop Printing	2.00	12/24/02

Fax, Voice and Image Toolkits

Product	Version	Date
Fax C++/ActiveX/COM	10.06	06/21/04
Voice C++/ActiveX/COM	10.06	06/21/04
Tiff SDK/ActiveX/COM	10.23	06/03/04
Annotation SDK/ActiveX/COM	10.23	06/03/04
Fax Cover Page Generator SDK/ActiveX	10.23	06/03/04
Image SDK/ActiveX	10.23	06/03/04
Document Imaging SDK/ActiveX	10.23	06/03/04
Barcode SDK/ActiveX	3.00	06/24/04

Free Software

Impact ColorFax Lite	5.51	05/20/04
Tiff Viewer Plug-in - Free Version	5.50	05/26/04
ModemWeasel	2.00	08/01/02

Internet Tools

Print2Email	3.01	01/20/03
Tiff Viewer Plug-in - Complete	5.50	05/26/04
Print Monitoring Server	2.40	04/02/04