



Black Ice Newsletter

Inside this issue:

New— MSI Install for the Black Ice Printer Drivers	1
Enhanced Brooktrout Support for the Fax C++/ActiveX	1
Special Offer on Imaging Toolkits	2
New - Structured Append feature for the Data Matrix Barcode Toolkits	3
Printer Driver Tips & Tricks	3

New— MSI Install for the Black Ice Printer Drivers

Black Ice software has added a new MSI sample installation to the Black Ice printer driver Resource Toolkit (RTK). The MSI install for the printer driver was created using Visual Studio .Net 2003, using the Install project feature. The sample MSI install was requested by several Black Ice Software customers who did not want to or could not use Install Shield.

The MSI setup is a basic (simplified) setup of the Black Ice printer driver: it copies the driver files to the required locations, adds the printer driver, print processor and print monitor and finally the printer to the system. The sample MSI install supports specifying the printer driver settings through the printer driver's INI file.

Additionally, the sample MSI setup allows developers to change the name of the printer and of the printer driver components to meet their specific requirements, since many Black Ice customers need to brand the driver.

To actually install the printer driver a "custom action" is used. The custom action is a function call from the Install DLL (MYDLL.DLL), included in the RTK. The function called by the MSI installation from the Install DLL makes all of the necessary Win32 API calls to install each printer driver component, including the print processor, print monitor, port, printer driver and the printer. To simplify the install, all component names are written to a registry key, and the Install DLL function reads the names of the printer driver components from that key. This way, the setup developer can easily change the name of the components by



(Continued on Page 2...)

BLACK ICE NEWSLETTER is published by Black Ice Software, Inc. The contents of this newsletter in its entirety are Copyright © 2004 by Black Ice Software, Inc. 292 Route 101, Salzburg Square, Amherst, NH 03031, USA. Black Ice Software, Inc. does hereby give permission to reproduce material contained in this newsletter, provided credit is given to the source, and a copy of the publication that the material appears in is sent to Black Ice Software at the above address.

Phone: (603) 673-1019
 Fax: (603) 672-4112
 E-mail: sales@blackice.com

www.blackice.com
 ftp.blackice.com

Enhanced Brooktrout Support for the Fax C++/ActiveX

Newly released version 10.10 of the Black Ice Fax C++/ActiveX development toolkit brings support for the Brooktrout TR1034 Analog boards, and TruFax 200 BRI boards by implementing support for the latest version of the Brooktrout device driver, version 4.9.

In their 4.9 drivers, Brooktrout Technologies has changed the way that configuration files are used. The telephony configuration file, "teleph.cfg", has been replaced by the call control configuration file, "callctrl.cfg". Black Ice has added support for the new configuration files

and parameters which can be specified in the new configuration file.

The "btcall.cfg" configuration file is still supported, with several new parameters available, including the name and location of the callctrl.cfg file. The btcall.cfg and callctrl.cfg files are text files and can be manually edited, however Black Ice recommends using the new tool created by Brooktrout Technology, the Brooktrout Configuration Tool. The new visual

(Continued on Page 2)

Subscription Service available for Printer Drivers, call for details.
 Get your subscription to receive the latest technologies and upgrades!

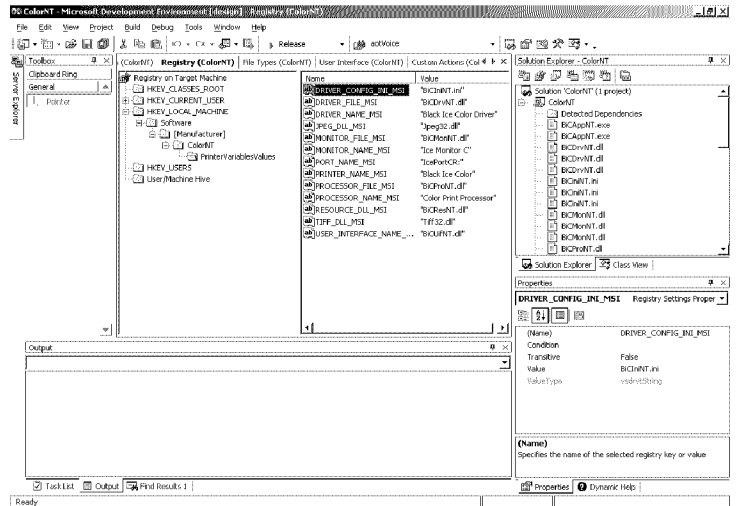
(MSI Install, Continued from Page 1)

changing the registry key values, as shown in the screen shot on the right.

When the Black Ice printer driver is installed, the printer settings will be read by the driver from the INI file (BiCIniNt.ini in the case of the Black Ice Color driver). The settings specified in the INI file will be set as default settings for every user on the system. If a setting is not specified in the INI file, the printer driver will use the default values hard coded in the driver, such as the JPEG file format for the color driver.

Developers can create their own MSI installation for the printer driver, using packages other than Visual Studio, but the sample install was written using Visual Studio .NET since this platform is the one most readily available to developers.

The primary benefit to using an MSI installation is its convenience and practicality for network wide distribution and deployment. The main reason to use MSI technology is to implement software (mandatory or public) by Windows group policies. Over all, MSI packaging is a standard Windows installation package and provides much more flexible options to install an application, and it is also easier to deploy for all Microsoft Windows based operating systems.



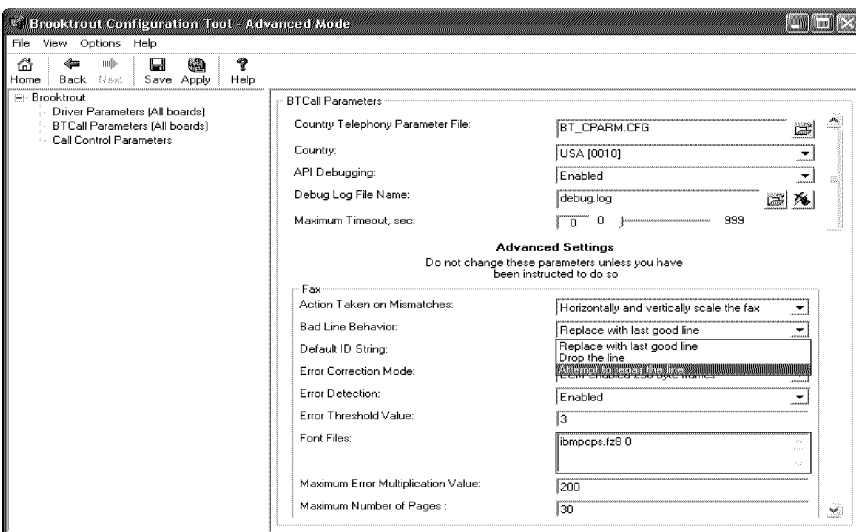
MSI Configuration Screen

Maintenance subscribers can contact the Black Ice Sales department to request their free upgrade to the latest Black Ice printer driver and Resource Toolkit containing the new MSI sample installation.

(Brooktrout, Continued from Page 1)

configuration tool allows users to edit and apply the configuration by providing a simple and easy to use user interface. The software is great for beginners as well as advanced users.

The tool comes with a detailed help to explain the meaning of each setting. The configuration files are created based on the specified settings and therefore makes manual editing of the configuration files obsolete.



Brooktrout Configuration Utility

Additionally, the new Brooktrout 4.9 drivers supported by Fax C++/ActiveX are Plug'n'Play drivers. Once the Brooktrout hardware and software are installed on your system, you must install and configure the device driver for the board. The driver can be installed automatically by letting the operating system identify the device, find the driver, and install it. You must be running on Windows 2000, XP, or 2003, to install the driver automatically using the Plug-and-Play feature of the operating system.

Developers can download the latest Fax C++/ActiveX demo to evaluate for themselves by visiting the Black Ice website at <http://www.blackice.com>

Special Offer

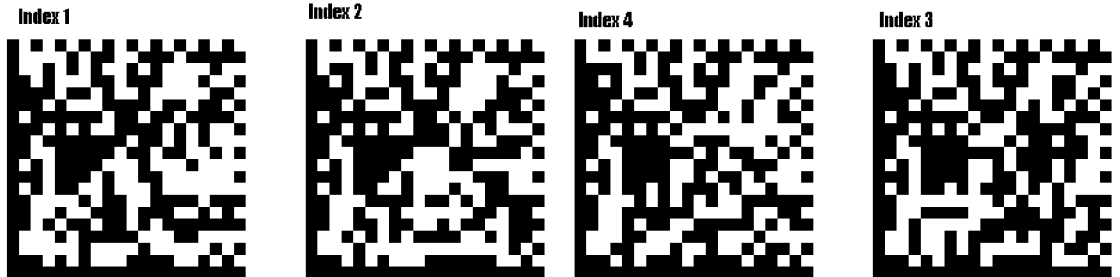
Save 20% off the purchase price of any Black Ice Imaging Toolkit Offer good only through October 31st so act fast! Contact sales@blackice.com for details.

New - Structured Append feature for the Data Matrix Barcode Toolkits

The new addition of the Structured Append feature to the Black Ice Data Matrix Barcode toolkits provides developers with the option of linking Data Matrix symbols together. Using the structured append feature, up to 16 Data Matrix symbols can be linked. The original data or file can be reconstructed from the linked symbols regardless of the order of the symbols.

A single Data Matrix symbol can contain up to a maximum 3,116 Digits or 2,335 ASCII characters.

By linking data matrix symbols using the structured append feature, developers can store over 49,000 digits or over 37,000 ASCII characters within 16 logically linked barcode symbols.

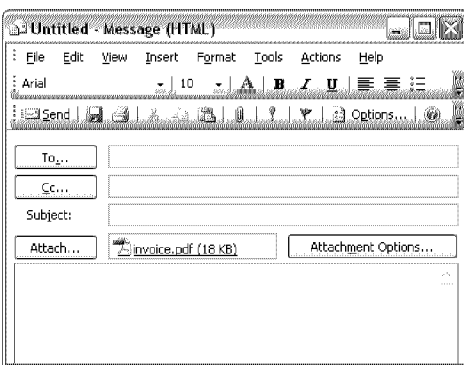


The above Data Matrix Symbols are linked using the New Structured append feature
Try it yourself at <http://www.blackice.com/images/structappendindex2.bmp>

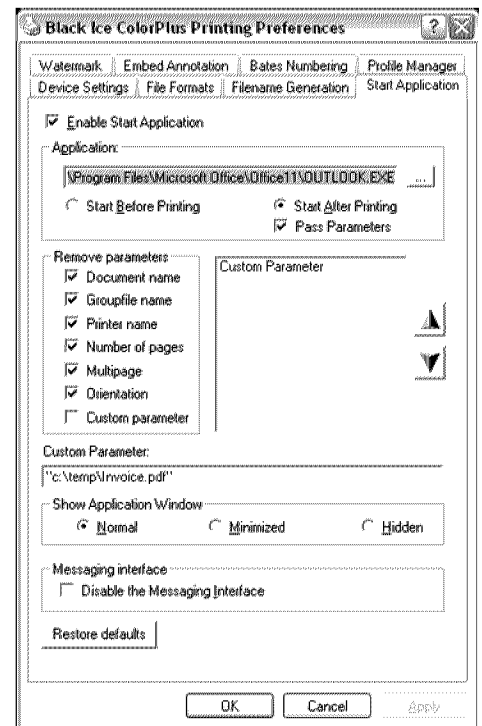
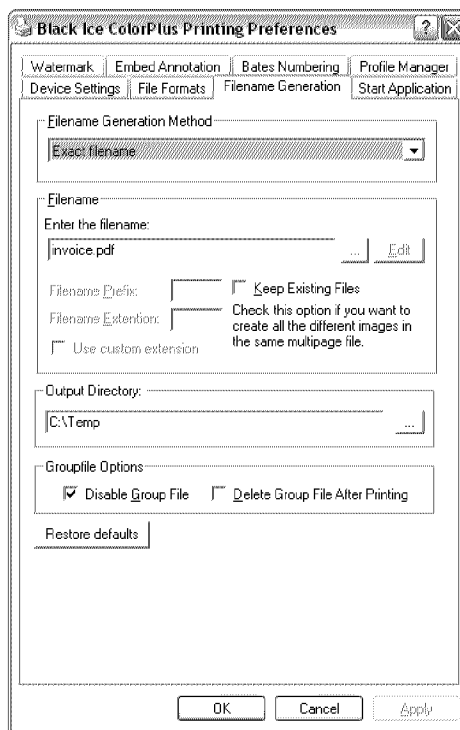
Printer Driver Tips & Tricks

Why reinvent the wheel? Using the Black Ice Printer Drivers with Microsoft Outlook

Developers can easily take advantage of the presence of Microsoft Outlook on a system to allow end users to email files generated by the Black Ice printer driver. For example, if your application generates PDF copies of invoices, the Black Ice printer driver can be configured to automatically attach the generated PDF file to an email message.



To take advantage of this functionality, developers must configure both the Filename Generation and Start Application settings. Using one of the exact filename methods, developers should specify an output filename, in this case "invoice.pdf", and they should also specify an output directory, such as "C:\Temp".



Developers should also configure the Start Application feature to launch an application once printing has finished and should set the full path and filename for the Outlook.exe as the name of the application to be launched after printing. The Pass Parameters feature should be enabled and only the Custom Parameter should be passed. The full path and filename should be specified as the Custom Parameter,

surrounded by quotes, in this case we specified "c:\temp\Invoice.pdf".

Once configured, any time a user prints to the Black Ice printer, Outlook will be launched with a new email message containing the newly printed file as an attachment.

•292 Route 101•
 •Amherst, NH 03031 USA•
 Tel: (603) 673-1019
 Fax: (603) 672-4112
 •www.blackice.com•

Inside

**New MSI Install for the Printer Drivers,
 Enhanced Brooktrout Support for the Fax C+++ and more**



Time to upgrade? Latest Version Numbers

Printer Drivers

Product	Version	Date
Color Printer Driver for Win95/98/ME	5.62	04/20/04
Metafile Printer Driver for Win95/98/ME	5.62	04/20/04
Mono Printer Driver for Win95/98/ME	5.62	04/20/04
PDF Printer Driver for Win95/98/ME	5.62	04/20/04
Mono Printer Driver for NT/Win2000/XP	8.76	09/20/04
Color Printer Driver for NT/Win2000/XP	8.76	09/20/04
Mono Printer Driver for NT/W2K/XP	8.76	09/20/04
Metafile Printer Driver for NT/W2K/XP	8.76	09/20/04
PDF Printer Driver for NT/W2K/XP	8.76	09/20/04
Terminal Server Printer Drivers/Win2003	8.76	09/20/04

Impact Products

Product	Version	Date
Impact Fax Server	4.36	02/18/04
Impact Fax on Demand	4.06	12/01/00
Impact Fax Broadcast	4.00	09/13/04
Impact ColorFax	6.00	07/22/04
Drag and Drop Printing	2.00	12/24/02

Fax, Voice and Image Toolkits

Product	Version	Date
Fax C++/ActiveX/COM	10.10	09/17/04
Voice C++/ActiveX/COM	10.10	09/17/04
Tiff SDK/ActiveX/COM	10.25	08/30/04
Annotation SDK/ActiveX/COM	10.25	08/30/04
Fax Cover Page Generator SDK/ActiveX	10.25	08/30/04
Image SDK/ActiveX	10.25	08/30/04
Document Imaging SDK/ActiveX	10.25	08/30/04
Barcode SDK/ActiveX	4.00	08/30/04

Free Software

Product	Version	Date
Impact ColorFax Lite	6.00	07/22/04
Tiff Viewer Plug-in - Free Version	5.60	07/22/04
ModemWeasel	2.00	08/01/02

Internet Tools

Product	Version	Date
Print2Email	3.01	01/20/03
Tiff Viewer Plug-in - Complete	5.60	07/22/04
Print Monitoring Server	2.40	04/02/04