

DEVELOPER NEWSLETTER

Inside This Issue:

- New - Exorcise Printer Driver User Settings **1**
- Improved Message Capture OC-Axe **1**
- Black Ice Imaging Toolkits - So good they're Scary... **2**
- Printer Driver Tricks & Treats - Printer Privileges **3**



The BLACK ICE NEWSLETTER is published by Black Ice Software, Inc. The contents of this newsletter in its entirety are Copyright © 2005 by Black Ice Software, Inc. 292 Route 101, Salzburg Square, Amherst, NH 03031, USA. Black Ice Software, Inc. does hereby give permission to reproduce material contained in this newsletter, provided credit is given to the source, and a copy of the publication that the material appears in is sent to Black Ice Software at the above address.

Phone: (603) 673-1019

Fax: (603) 672-4112

sales@blackice.com

www.blackice.com

New - Exorcise* Printer Driver User Settings

Now available, version 9.70 of the Black Ice printer drivers include powerful new enhancements which allow developers to programmatically set and restore default printer settings on either a system wide or individual user basis.

The Resource Toolkit shipped with every Black Ice printer driver includes three sample installation projects which developers can use to create their own custom installations.

As part of their custom installation, developers can specify their own unique default printer settings for the driver to be installed with. Prior to version 9.70, after installation the default printer driver settings could only be changed by reinstalling the Black Ice printer driver, which requires a system reboot.

Using the newly updated BlackIceDevmode DLL and OCX, developers can change

and restore default printer setting for the current user or for all users on the system. To change the default printer settings developers should perform the following steps:

ClearUserSettings function/method - clears the existing printer settings for either the current user or all users on the system

Load a Devmode - developers

(Continued on page 2)

Improved Message Capture OC-Axe



The Black Ice printer drivers include a messaging interface which provides developers with an easy to use method of receiving notifications from the printer driver at various stages of printing. Developers can capture the printer driver messages to update their application status bars, determine when printing has finished and more.

Version 9.70 of the Black Ice printer drivers include an updated Message Capture OCX

control which allows developers to capture and utilize additional printer driver messaging functionality, including:

MemoryImage Event

The Black Ice printer drivers can generate image files in memory, thus bypassing disk access. Passing images in memory is especially useful when developers are looking to post process the generated files, or store the files in document archives. When using the

Named Pipe Messaging interface, the Black Ice printer drivers can notify the message capture application that an image has been passed in memory.

DevmodeChanged Event

Developers can programmatically change the Black Ice printer driver settings using a variety of methods, including the BlackIceDevmode controls. When using the Named Pipe Interface with the Message Capture OCX, the Black Ice

(Continued on page 3)

*Exorcise stems from the word "exorcism" - To free from evil spirits or malign influences



(Printer Settings, Continued from page 1)

need to specify the new Devmode to be used by the Black Ice printer drivers as the default settings. If developers want to reset users back to the original default settings or from a new INI file, they can load the printer settings from the printer driver INI file using the CreateDefaultSettings function/method. Developers can also load the current Devmode from the Black Ice printer driver and apply those settings using the LoadBlackIceDevmode function/method.

SaveDefaultDevmode - saves the Devmode as the new default Devmode

for the printer. For users other than the current user, the next time they log onto the system they will be using the new, default printer settings, the current user will have the new settings immediately.

Benefits:

Technical Support Tool - Developers can create a utility to programmatically restore the default printer settings system wide or for a specific user in the case that a user has switched the printer to use settings which are not compatible with the developed application.

Update Printer Settings without a reboot - in the case when the required printer set-

tings have changed on a system, developers can set the new printer settings without having to reinstall the driver or requiring their users to manually change the printer settings, removing the element of human error.

Printer Driver Installation Update

The latest Black Ice printer driver installations now use the SaveDefaultDevmode() function of the BlackIceDevmode DLL. Any printer settings specified during the installation will be saved as the default printer settings, allowing the installing user to set system wide printer settings.

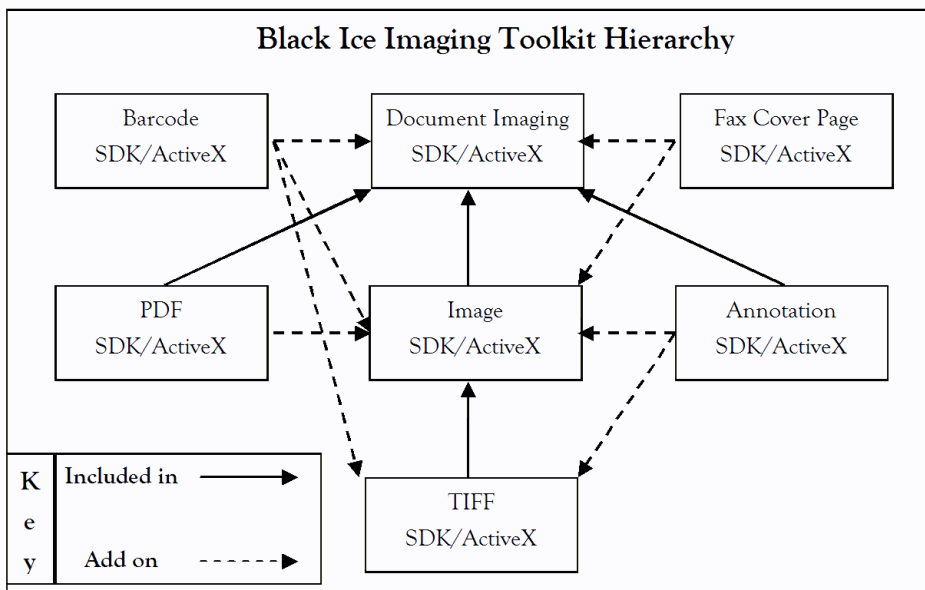
Black Ice Imaging Toolkits - So good they're Scary...

Black Ice Software provides a line of imaging development tools to meet the needs of any application developer. Unlike most toolkit providers, Black Ice provides a range of royalty free imaging toolkits, including royalty free barcode generation, annotation, and PDF read and write.

The Black Ice Imaging Toolkits can be utilized to directly complement additional Black Ice development tools. Developers can use the Document Imaging SDK/ActiveX to develop a front end user interface for their fax solution based off of the Fax C++/ActiveX, including document clean up and deskewing crooked faxes, and Black Ice Printer Driver customers can use the toolkits to post proc-

ess or display files created by the Black Ice printer drivers.

The following chart shows the relationship of the Black Ice Imaging Toolkits:

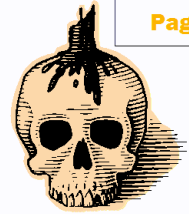


Has the competition left your company for dead?

Save 20% off any Black Ice Imaging Toolkit through Halloween and resurrect your sales!

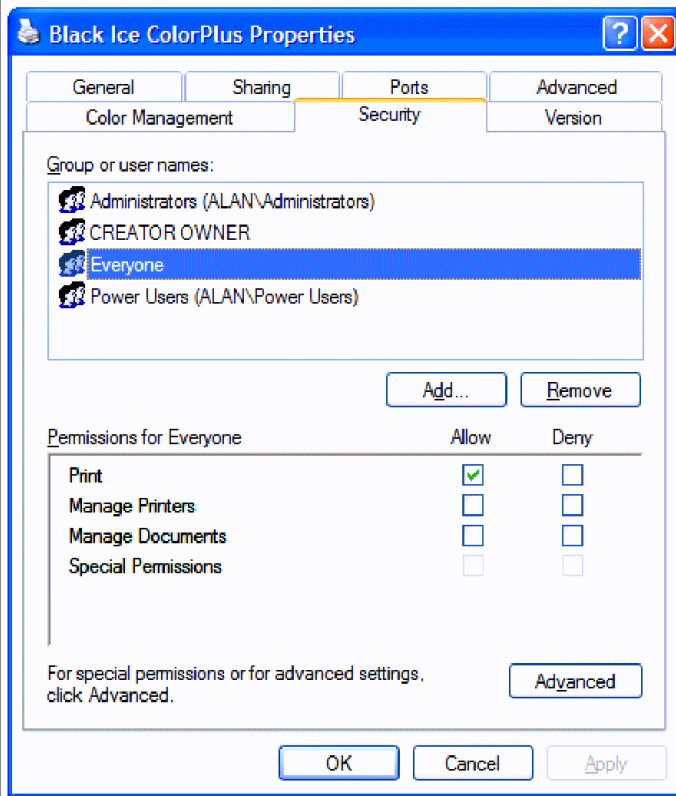


Printer Driver Tricks & Treats - Printer Privileges



When any printer, Black Ice or otherwise, is installed on a system, the operating system will assign default printer permissions allowing all users to print, and allow specific groups to modify the printer and/or the documents printer. Since printers are available to each and every user on the network, system administrators often times choose to restrict access for users and groups by setting specific permissions.

Windows operating systems provide three levels of printing permissions: Print, Manage Printers, and Manage Documents. Additionally, groups and users can have their printer permissions set to Deny, preventing them from using the printer at



(Message Capture, Continued from page 1)

printer drivers will now trigger a DevmodeChanged event which can be captured by the listening application. By capturing this message, developers can check the changes to the DEVMODE and can proceed accordingly.

StopCapture Method

In some cases, developers may want to alternate between multiple message capturing applications. Prior to version 9.70 of the Black Ice printer drivers, this was not possible. However, version 9.70 includes a new method in the Message

all. Below is an overview of the three levels of available printer permissions :

Print

Users with print permissions can connect to a printer and print to the printer. Print permission is assigned to all members of the Everyone group by default. Print permissions do not allow users to change printer settings or modify documents sent to the printer.

Manage Printers

Manage Printers permissions provide users with complete administrative control for the printer. Users can pause and restart the printer, change spooler settings, share a printer, change printer permissions, and change printer properties. The Manage Printers permission is assigned to members of the Administrators and Power Users by default.

Manage Documents

Users with Manage Documents permissions can pause, resume, cancel, and reorder the documents printed by all users. Manage Documents by itself does not allow the user to send files to the printer or change printer settings. Manage Documents is assigned to members of the Creator Owner group by default.

If a system administrator wishes to restrict the ability of a user to change specific printer settings, they should change the user's default printer privileges accordingly.

IMPORTANT: If a user account does not have permissions to change printer settings, developer applications will also not be able to change the printer settings programmatically, for example using the BlackIceDevmode controls, unless the process which changes the printer settings is run from a user account which does have Manage Printers permissions.

Capture OCX control, StopCapture, which allows developers to instruct their message capturing applications to stop capturing messages from a Named Pipe, allowing them to start capturing messages from a different application.