

# Black Ice Software

## November Developer Newsletter

November 2006

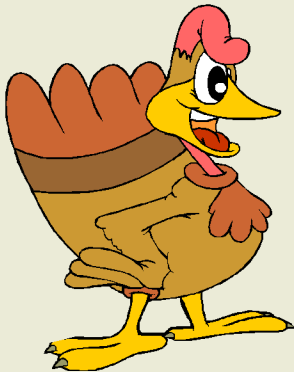
Volume 11, Issue 11

### Inside this issue:

XML Format added to Printer Driver 1

Changing a Stamp Object in the Coveragepage SDK Programmatically 1

Document Imaging-Printing from C#, J#, VB.NET 3



The BLACK ICE NEWSLETTER is published by Black Ice Software, Inc. The contents of this newsletter in its entirety are Copyright © 2006 by Black Ice Software, Inc. 292 Route 101, Salzbürg Square, Amherst, NH 03031, USA. Black Ice Software, Inc. does hereby give permission to reproduce material contained in this newsletter, provided credit is given to the source, and a copy of the publication that the material appears in is sent to Black Ice Software, Inc. at the above address.

Phone: (603) 673-1019

Fax: (603) 672-4112

[Sales@blackice.com](mailto:Sales@blackice.com)

[www.blackice.com](http://www.blackice.com)

## Printing

### XML Format added to Printer Driver

The XML file format is available in the Black Ice printer drivers from version 9.91. The Color, ColorPlus and PDF printer drivers contain the new XML file format.

Available XML file formats:

XML with:	Color	Color-Plus	PDF
GIF	Yes	Yes	No
PNG	Yes	Yes	No
JPEG	Yes	Yes	No
BMP	Yes	Yes	No
PDF	No	Yes	Yes

Available XML file formats according to color depth

XML with:	Mono	8 bits	24 bits
GIF	Yes	Yes	No
PNG	Yes	Yes	Yes
JPEG	No	No	Yes
BMP	Yes	Yes	Yes
PDF	Yes	Yes	Yes

You can select the XML file format on the File Formats tab of the Printing Prefer-

ences. When you select the XML file format an XML file will be generated when the printing finishes successfully. The name of the XML file is the same as the group file with .xml extension. The generated XML file contains information about the printing. For example: printing status, document name, printing date and time, total number of pages etc.

The XML file is useful for processing the printing information with a third party

*(Continued on page 2)*

### This Month's Sale:



**BLACK ICE SOFTWARE**  
**THANKSGIVING SALE!**

**20% OFF**  
**FAX/VOICE TOOLKIT**

## Imaging

### Changing a Stamp Object in the Coveragepage SDK Programmatically

If one wants to change a stamp object programmatically, one has to set the stamp object as the current object (one can operate on an object only if the object is selected as the current object) then one can load an image into the selected object. There are

two steps one has to follow.

First one has to set the stamp object which one would like to modify as the current cover page object. The Current object can be set in three ways. One can set the first cover page object as the cur-

rent object by calling the FindFirst method; one can change the current object to the next object by calling the FindNext method; or one can set the current object from an identifier by calling SetCurrObj.

*(Continued on page 3)*

(Continued from page 1)

application. You can develop an application easily that parses the information of the XML file and for example generates an HTML file for displaying the printing status.

The XML file is generated from the group file, so the generation of the group file must be enabled. If the Disable Group File check box is checked on the Filename Generation tab the XML file won't be generated.

### Description of the Tags in the XML file.

`<printing_information>` : root element  
`<date>` : element content for containing elements for date and time  
`<month>` : simple content for containing the month of the printing  
`<day>` : simple content for containing the day of the printing  
`<year>` : simple content for containing the year of the printing  
`<hour>` : simple content for containing the hour of the printing  
`<minute>` : simple content for containing the minute of the printing

`<second>` : simple content for containing the second of the printing  
`<printed_image_inf>` : element content for containing information about printed image  
`<printer_name>` : simple content for containing the printer name  
`<document_name>` : simple content for containing the document name  
`<image_format>` : simple content for containing the printed image format  
`<append_image_enabled>` : If the content is Yes and more pages were printed the generated image is a multipage file, otherwise single page images were generated  
`<bits_per_pixel>` : simple content for containing the color depth of the printed image  
`<total_number_of_pages>` : simple content for containing the number of pages printed  
`<print_status>` : simple content for containing the printing status  
`<page_i>` : element content for containing information about page *i*.  
`<file_path>` : simple content for containing the path of the printed image.  
`<file_name>` : simple content for containing the file name of the printed image.  
`<orientation>` : simple content for containing the orientation of the printed image

`<width_in_pixels>` : simple content for containing the width of the printed image in pixels  
`<height_in_pixels>` : simple content for containing the height of the printed image in pixels  
`<x_dpi>` : simple content for containing the horizontal resolution of the printed image  
`<y_dpi>` : simple content for containing the vertical resolution of the printed image. ◀

```
<?xml version="1.0" ?>
<!-- XLM file is generated by Black Ice Software Inc. printer driver -->
- <printing_information>
- <date>
  <month>10</month>
  <day>12</day>
  <year>2006</year>
  <hour>13</hour>
  <minute>30</minute>
  <second>0</second>
</date>
- <printed_image_inf>
  <printer_name>Black Ice Color</printer_name>
  <document_name>Games.txt - Notepad</document_name>
  <image_format>XML with JPEG</image_format>
  <append_image_enabled>No</append_image_enabled>
  <bits_per_pixel>24</bits_per_pixel>
  <total_number_of_pages>1</total_number_of_pages>
  <print_status>Printing finished successfully</print_status>
</printed_image_inf>
- <page_1>
  <file_path>E:\Laci\1\ColorImages</file_path>
  <file_name>AAA12D000001.JPG</file_name>
  <orientation>Portrait</orientation>
  <width_in_pixels>2550</width_in_pixels>
  <height_in_pixels>3300</height_in_pixels>
  <x_dpi>300</x_dpi>
  <y_dpi>300</y_dpi>
</page_1>
</printing_information>
```

(Coverpage Stamps, continued from page 1)

If one wants to iterate cover page objects and make specific operations on stamp objects, one can use the FindFirst and FindNext methods. While if one wants to access a stamp object directly, one should use the SetCurrObj method.

The next step is the stamp modification. There are many ways to do this too. One can load a tiff image onto the stamp by calling the ObjSetStampFile method; one can load a bitmap into the stamp by calling the ObjSetStampBMP method; or one can load a device independent bitmap (DIB) onto the stamp by calling the ObjSetStampDIB method.

The following C# code snippet shows

how one can change a stamp on the cover page and save it:

```
BiCpClass BICP = new BiCpClass();
int cp_id = BICP.LoadCpgFile("test.cpg");
BICP.SetCurrObj(cp_id, stampID);
BICP.ObjSetStampFile(cp_id, "image.tif");
BICP.SaveCpgFile(cp_id, "new.cpg");
```

In this example the identifier of the stamp object is stampID. Techniques for accessing object IDs are:

- When someone creates a new cover page object by calling CreateCpgObj method, the "current object" points to this new object, so one can get the ID of the new object in a variable returned by GetCurrObjID.

- If one has an existing cover page object, then one can iterate the list of objects with the FindFirst and FindNext methods and one can get the ID of the searched object using the GetCurrObjID method.

- The IDs are saved in the cover page template file, so if one knows the IDs of the objects one can use them to track the object in an application. If one wants to change the ID of an object, one can use the SetCurrObjID method on the current object.

It is important that the selected object has the "focus" or it is the "current object". One must use the SetCurrObj method with the ID to set the "focus" or set the object as the "current object".

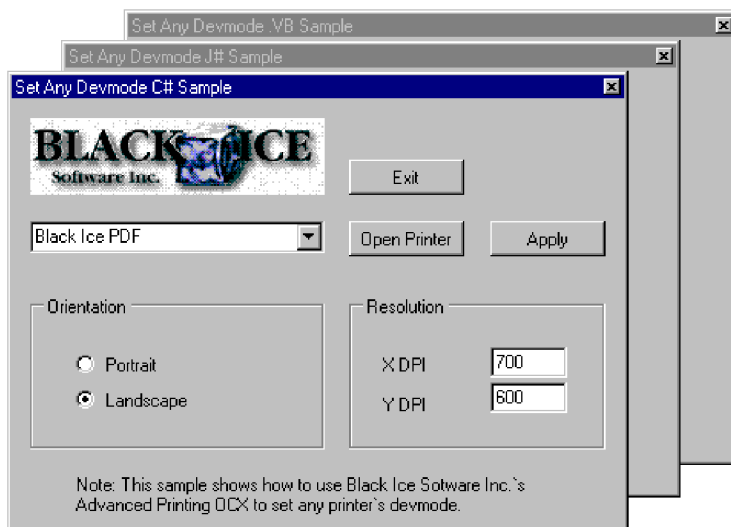


## Document Imaging-Printing from C#, J#, VB.NET

The Black Ice Software Advance printing module in Document Imaging SDK makes printing and printer configuration a simple task not only for the current print job but to configure any printer driver. The Advance printing module lets one modify the printing device's DEVMODE data structure from C#, J#, and VB.NET. New sample applications are added to the Document Imaging SDK to demonstrate how easy is to use the Advanced Printing ActiveX control from .NET applica-

tions. The Advance printing module not only works with Black Ice printer drivers, but with any printer drivers. The modifications to the samples show how any printer's DEVMODE can be easily modified. It is as easy as opening any printer by using the combo box, which lists the installed printers on the PC, and clicking the Open Printer button. The selected printer's DEVMODE will be loaded. The sample is limited for simplicity to show orientation and resolution data, which are loaded from the

DEVMODE. Changing the values of these two data elements and applying this data will set the corresponding fields in the opened DEVMODE data structure. Any data element of the DEVMODE data structure can be changed. The sample applications are written in .NET C#, .NET J#, and .NET VB environments. The DEVMODE setting features can be easily called from the Advanced Printing OCX which is part of the Document Imaging SDK. ◀



### Implementation

To use Advanced Printing ActiveX control, just add the ActiveX control to the Form you are working with.

#### Open printer in C#, in J# (example)

```
//Load devmode of selected printer
prnHandler = axBiAdvprnW1.BiOpenPrinter(prn, 0);
devmodeHandler = axBiAdvprnW1.BiLoadPrinterSettings(prn);
```

#### Set loaded devmode properties in C# (example)

```
int xDPI = System.Convert.ToInt16(textBox1.Text);
int yDPI = System.Convert.ToInt16(textBox2.Text);
axBiAdvprnW1.SetXDPI((short)xDPI, devmodeHandler);
axBiAdvprnW1.SetYDPI((short)yDPI, devmodeHandler);
```

#### Save devmode and close the printer in C# (example)

```
if (devmodeHandler != 0)
{
    axBiAdvprnW1.BiReleasePrinterSettings(devmodeHandler);
    axBiAdvprnW1.BiClosePrinter(prnHandler);
}
```



292 Route 101  
Amherst, NH, 03031

Phone: 603-673-1019  
Fax: 603-672-4112  
E-mail: sales@blackice.com

Presorted Standard  
US Postage  
PAID  
Permit No. 425  
Manchester, NH

## ***Inside***

- XML Format added to Printer Driver
- Changing a Stamp Object in the Cover-page SDK Programmatically
- Document Imaging-Printing from C#, J#, VB.NET

## **Time to upgrade?**



## **Latest Version Numbers**

### **Printer Drivers**

Printer Drivers for ME/98/95 Mono, Color, ColorPlus, EMF, PDF	5.81	4/13/06
Printer Drivers for XP/2000/NT Color, ColorPlus, EMF, Mono, PDF	9.91	10/16/06
Printer Drivers for 2003, Citrix and Terminal Servers Color, ColorPlus, EMF, Mono, PDF	9.91	10/16/06

### **Impact Products**

Impact Fax Server	7.04	9/15/06
Impact Fax Broadcast	5.10	7/01/06
Impact Fax on Demand	4.08	7/2/02
Impact ColorFax	7.02	8/15/06
Drag and Drop Printing	2.00	12/24/02

### **Fax, Voice, and Image Toolkits**

Fax C++/ActiveX	12.23	10/10/06
Voice C++/ActiveX	12.23	10/10/06
Document Imaging SDK/ActiveX	10.68	9/21/06
PDF Plug-in	10.68	9/21/06
Annotation SDK/ActiveX	10.68	9/21/06
Image SDK/ActiveX	10.68	9/21/06
Tiff SDK/ActiveX	10.68	9/21/06
Cover Page Generator SDK/ActiveX	10.68	9/21/06
Barcode SDK/ActiveX	4.51	7/13/06

### **Internet Tools**

Print2Email	5.13	10/19/06
Tiff Viewer Plug-in - Complete	7.0	9/20/06
Print Monitoring Server	3.00	9/16/04
Print2RDP	3.0	9/6/06
Voice2Email	2.01	4/20/05
Print2FTP	2.02	8/15/06

### **Free Software**

Impact ColorFax Lite	7.02	8/15/06
Tiff Viewer Plug-in - Free Version	7.0	9/20/06
ModemWeasel	2.00	8/01/02